



# Grand County Active Transportation & Trails

Review of Spring Field Season

Repairs to ramp in Klondike Non-Motorized Trail Network

# GCATT Programs



## Trail Infrastructure

Full-time Operations Coordinator

6 part-time spring/fall Trail Technicians

4 part-time summer Trail Technicians



# GCATT Programs



## Trail Infrastructure

Full-time Operations Coordinator  
6 part-time spring/fall Trail Technicians  
4 part-time summer Trail Technicians

## Responsible Recreation

Full-time Responsible Recreation Program Coordinator  
6 part-time seasonal Trail Technicians



# Trail Infrastructure Spring 2022 Field Projects



# Maintenance Projects

## Types of Maintenance

### **1. Unscheduled/Urgent**

- 1. User-created impacts, such as social trails**
- 2. Weather events, such as flash floods**
- 3. Rock fall**
- 4. Reroutes due to new development**

### **2. Routine Annual or Semi-Annual Maintenance**

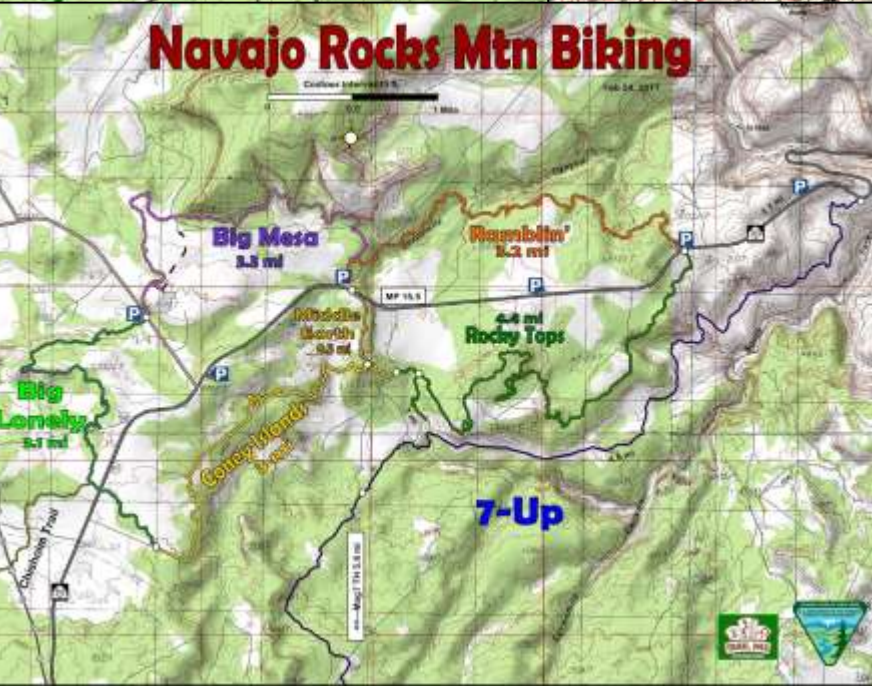
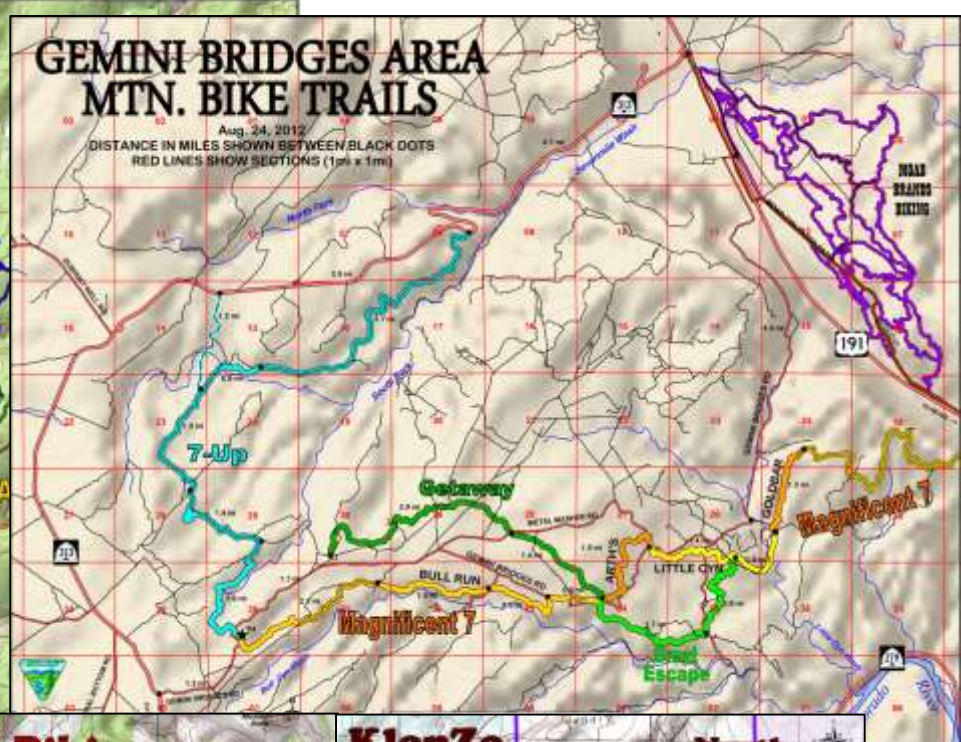
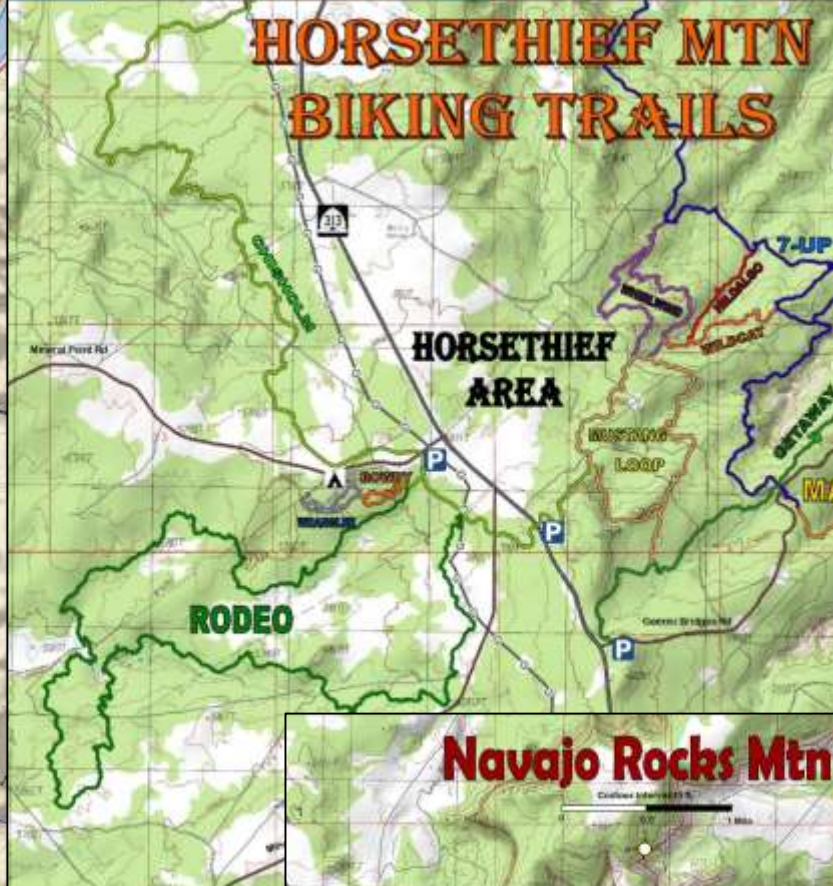
- 1. Trail deliniation & raking out off-trail tracks**
- 2. Re-painting marker dots**
- 3. Widening benchcuts**
- 4. Repairing tread & drainage features**
- 5. Repairing rock armoring**

### **3. Intensive Maintenance (5-7 year cycle)**

- 1. Repairing major trail features such as rock ramps, retaining walls, and switchbacks**

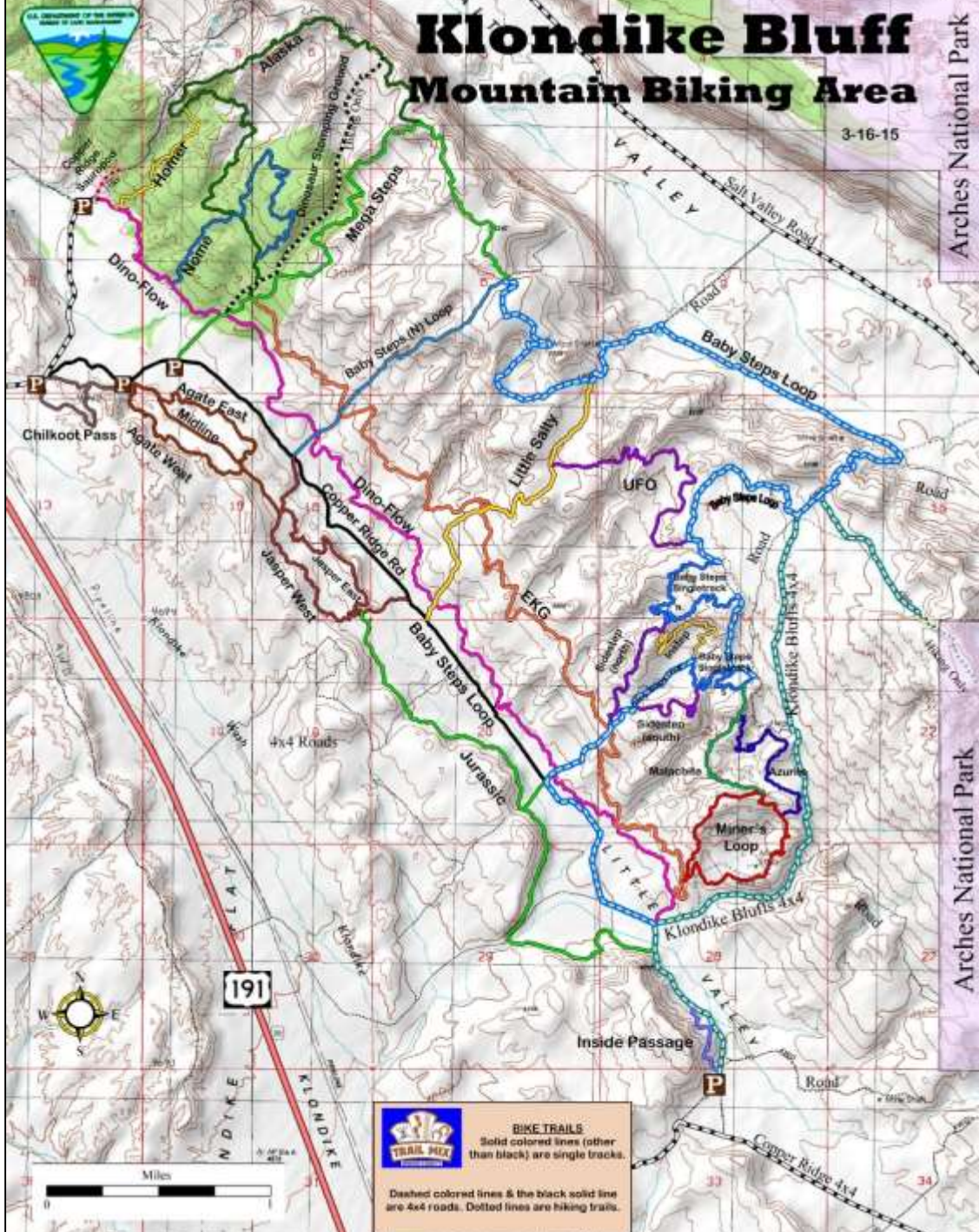
### **4. Trailhead & On-Trail Signage**

- 1. Wayfinding**
- 2. Educational**

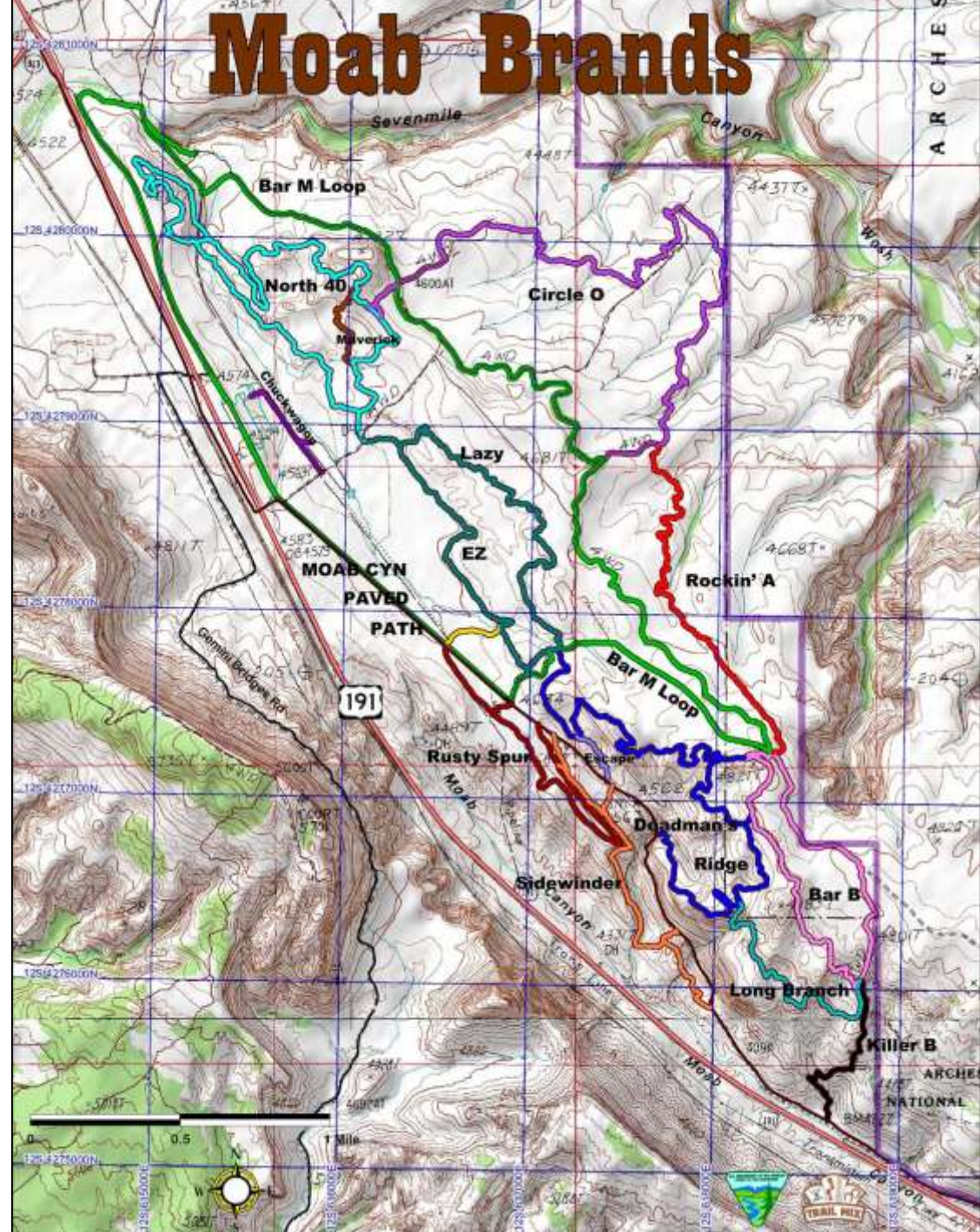


# Klondike Bluff Mountain Biking Area

3-16-15



# Moab Brands



# Maintenance Projects

## Types of Maintenance

### 1. **Unscheduled/Urgent**

1. **User-created impacts, such as social trails**
2. **Weather events, such as flash floods**
3. **Rock fall**
4. **Reroutes due to new development**

### 2. **Routine Annual or Semi-Annual Maintenance**

1. **Trail deliniation & raking out off-trail tracks**
2. **Re-painting marker dots**
3. **Widening benchcuts**
4. **Repairing tread & drainage features**
5. **Repairing rock armoring**

### 3. **Intensive Maintenance (5-7 year cycle)**

1. **Repairing major trail features such as rock ramps, retaining walls, and switchbacks**

### 4. **Trailhead & On-Trail Signage**

1. **Wayfinding**
2. **Educational**





moabtrailmix  
MOAB Brand Trails



**VOLUNTEERS  
NEEDED!!** TUESDAY 1/25  
MOAB BRANDS




"SORRY FOR  
THE TRACKS"  
SINCERELY, COW



[View insights](#)

[Boost Post](#)



 Liked by porcupineshuttle and 132 others

moabtrailmix Calling all volunteers! The cows have been wandering around the Moab Brands trails and they have made some new cow paths that need... more

[View all 15 comments](#)

gofastglover @illbeatsradio ❤️👊





moabtrailmix



**THANK  
YOU  
VOLUNTEERS!!**



# Maintenance Projects

## Types of Maintenance

### 1. **Unscheduled/Urgent**

1. User-created impacts, such as social trails
2. Weather events, such as flash floods
3. Rock fall
4. Reroutes due to new development

### 2. **Routine Annual or Semi-Annual Maintenance**

1. Trail deliniation & raking out off-trail tracks
2. Re-painting marker dots
3. Widening benchcuts
4. Repairing tread & drainage features
5. Repairing rock armoring

### 3. **Intensive Maintenance (5-7 year cycle)**

1. Repairing major trail features such as rock ramps, retaining walls, and switchbacks

### 4. **Trailhead & On-Trail Signage**

1. Wayfinding
2. Educational



OK Corral redesign completed in spring 2021



Trail damage from flash flood in summer 2021



# Maintenance Projects

## Types of Maintenance

### 1. **Unscheduled/Urgent**

1. User-created impacts, such as social trails
2. Weather events, such as flash floods
3. Rock fall
4. Reroutes due to new development

### 2. **Routine Annual or Semi-Annual Maintenance**

1. Trail deliniation & raking out off-trail tracks
2. Re-painting marker dots
3. Widening benchcuts
4. Repairing tread & drainage features
5. Repairing rock armoring

### 3. **Intensive Maintenance (5-7 year cycle)**

1. Repairing major trail features such as rock ramps, retaining walls,
2. and switchbacks

### 4. **Trailhead & On-Trail Signage**

1. Wayfinding
2. Educational







# Amasa Back Connector Trail



**BEFORE**



**AFTER**

# Maintenance Projects

## Types of Maintenance

### 1. **Unscheduled/Urgent**

1. User-created impacts, such as social trails
2. Weather events, such as flash floods
3. Rock fall
4. Reroutes due to new development

### 2. **Routine Annual or Semi-Annual Maintenance**

1. Trail deliniation & raking out off-trail tracks
2. Re-painting marker dots
3. Widening benchcuts
4. Repairing tread & drainage features
5. Repairing rock armoring

### 3. **Intensive Maintenance (5-7 year cycle)**

1. Repairing major trail features such as rock ramps, retaining walls, and switchbacks
2. Retaining walls, and switchbacks

### 4. **Trailhead & On-Trail Signage**

1. Wayfinding
2. Educational



# Mega Steps Trail

**BEFORE**



**AFTER**



# Alaska Trail



**BEFORE**



**AFTER**





# Alaska Trail



**BEFORE**



**AFTER**

# Alaska Trail



**BEFORE**



**AFTER**

**BEFORE**



**AFTER**



**Homer Trail**

# Rusty Spur Trail



# Rusty Spur Trail

**BEFORE**



**AFTER**



# Cattleguard Project



# Maintenance Projects

## Types of Maintenance

### 1. **Unscheduled/Urgent**

1. **User-created impacts, such as social trails**
2. **Weather events, such as flash floods**
3. **Rock fall**
4. **Reroutes due to new development**

### 2. **Routine Annual or Semi-Annual Maintenance**

1. **Trail deliniation & raking out off-trail tracks**
2. **Re-painting marker dots**
3. **Widening benchcuts**
4. **Repairing tread & drainage features**
5. **Repairing rock armoring**

### 3. **Intensive Maintenance (5-7 year cycle)**

1. **Repairing major trail features such as rock ramps, retaining walls, and switchbacks**

### 4. **Trailhead & On-Trail Signage**

1. **Wayfinding**
2. **Educational**



# Trails maintained so far in 2022...



- Pipe Dream
- Navajo Rocks:
  - Coney Islands
  - Rocky Tops
  - Ramblin'
- Brands:
  - OK Corral
  - Rusty Spur
  - Lazy
  - EZ
  - Bar M
  - Sidewinder
- Klondike:
  - Homer
  - Alaska
  - Mega Steps
  - UFO
  - Jurassic
  - Jasper
- Horsethief:
  - Lasso
  - Rowdy
  - Wrangler
- Mag 7:
  - Bull Run
  - Goldbar Rim
  - Portal
- Raptor Route:
  - Eagle Eye
  - Falcon Flow
- Klonzo:
  - Dunestone
  - Trailheads
- Amasa Back:
  - Hymasa

# Grants & Cost Share Agreements

## **Recreational Trails Program Grant 2020 - 2022**

1. User-created impacts, such as social trails

## **Recreational Trails Program Grant 2021 - 2023**

1. Trail deliniation & raking out off-trail tracks

## **BLM Moab Field Office Cost Share Agreement**

1. Repairing major trail features such as rock ramps, retaining walls, and switchbacks

## **US Forest Service Moab/Monticello RD Cost Share Agreement**

1. Wayfinding

## **Donations**

1. Moab Trails Alliance map sales
2. Private donations (businesses, events, individuals)
3. Volunteers

# Volunteers, Spring 2022

## Groups

- Utah Conservation Corps
- Colorado Rocky Mountain School
- Local volunteers

## Adopt-a-Trail Program launched

- Development included creating a volunteer maintenance manual, organizing trainings, creating work documentation system using common trail App
- 9 trails adopted so far, 3 more people awaiting training

GCATT receives an average ~1,700 volunteer hours annually

~400 hours donated to far, valued at over \$10,000





- Further ways you can disguise the impacted area include adding rocks of all sizes, branches, or if the impacted area is near a Juniper tree, gather tree debris from under the tree and spread on the area.

### Trail Lining

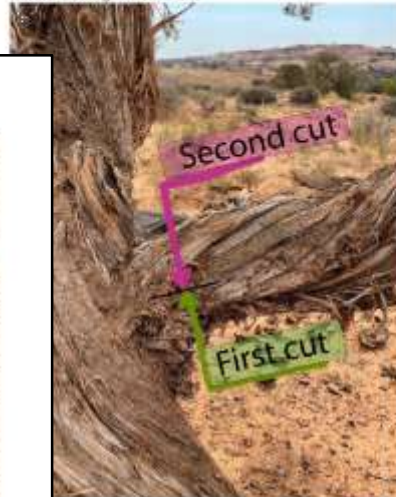
The rocks and limbs lining the trails are not there naturally. They are placed there to discourage riders from riding off trail. Lining is a great way to not only physically block riders, it is an easy way to break the line of sight and warn riders of a tight turn, or unexpected obstacle coming.

**What to use:** Try to collect lining by walking on hardened surfaces and in wash beds.

- **Rocks:** Rocks should be bowling bowl size or larger if available, ideally requiring two people to lift, and be buried into the ground if possible. Rocks smaller than bowling bowl size are easily dislodged and don't create a good visual boundary.



It is important when limbing a juniper limb to cut through all the bark on the underside of the limb before cutting the limb off.



This limb was not undercut, so the bark peeled off down the limb.



**Limbs/branches:** When available, limbs of dead trees are a great source of lining. DO NOT CUT LIMBS FROM LIVE TREES! Find trees that are already on the ground and completely dead. If cutting limbs off a standing dead tree, don't remove all the limbs from the tree, leaving an unattractive stump. Try to take limbs from the side of the tree facing away from the trail. Limb cuts on a tree can be unsightly and degrade user experience.



**Warning\*\*** Snakes, scorpions and spiders live in and amongst dead trees and under rocks. Inspect the area before approaching a dead limb or tree, and inspect both sides of the limb or rock before carrying it away.

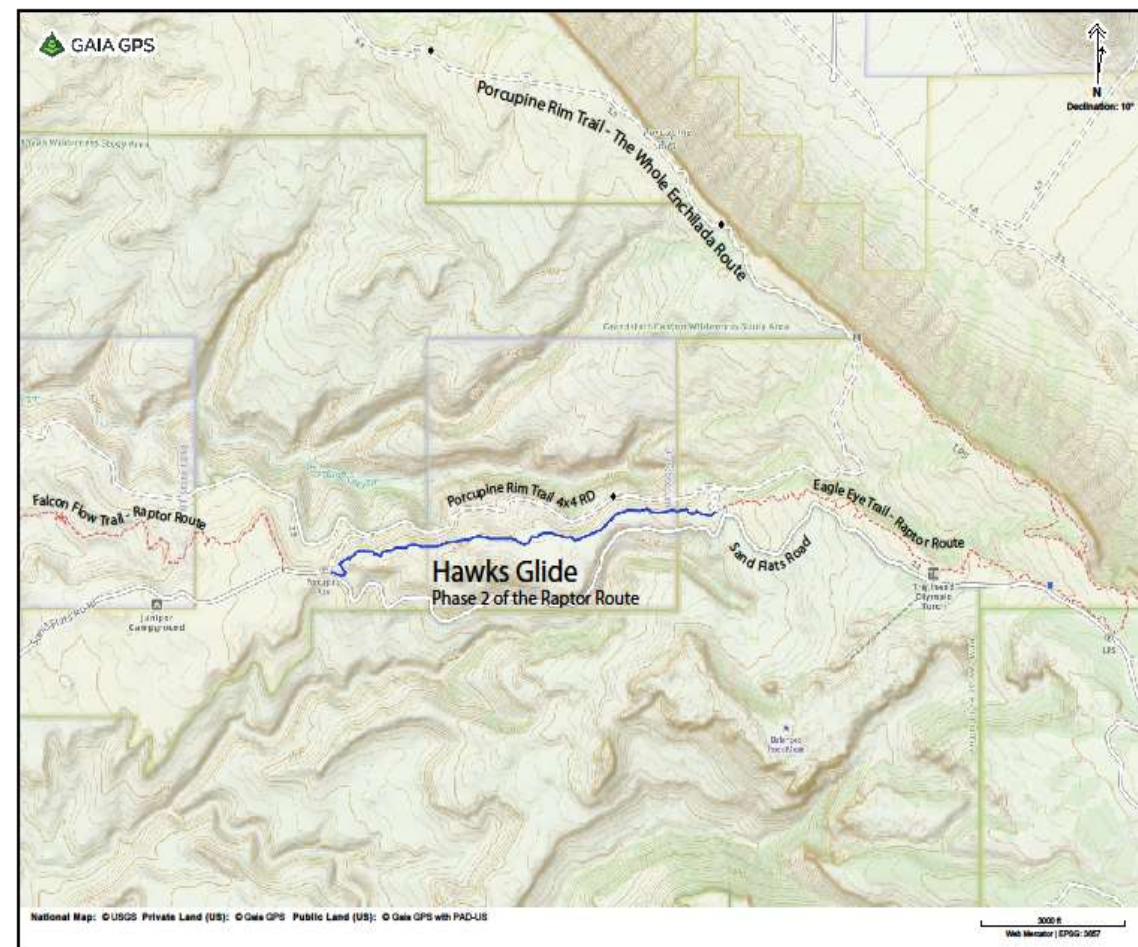
### Place Lining

parallel the trail – Limbs paralleling the trail should be large, 3+ inches in diameter and 4+ feet long to make it more difficult for them to be moved or fall into the trail. Small limbs easily blow away, and quickly degrade once placed on the ground.  
perpendicular to the trail – This technique is good for blocking riders who get off the trail past the parallel lining but keep going. A perpendicular log creates a visual block of the off-trail line, and physically can aid in stopping them.

- Place the majority of the lining materials 6-10" outside of the edge of the trail tread. If a section of trail is getting wider than it is supposed to be, lining can be used to narrow the tread back

# Build Projects

- None this spring!
- Upcoming: Hawks Glide Trail construction in September



# Responsible Recreation Spring 2022 Projects



# Visitor Education

## Categories

### 1. Before visitors get to town (trip planning phase)

- DiscoverMoab.com (in collaboration with Economic Development Department)
  - Streamlining planning resources
  - Integrating more responsible recreation info onto pages used for trip planning
- Social Media
  - Trail condition “Mud Reports”
  - “Responsible Recreation” series
- Popular Apps and websites (AllTrails, Trail Forks, the “Project” suite, etc)
  - Economic Development pursuing Moab-specific App which would give local control over content

### 2. In-town

- Businesses partnership program
- “Responsible Recreation” series in newspapers & publications
- Print resources
- Billboard update

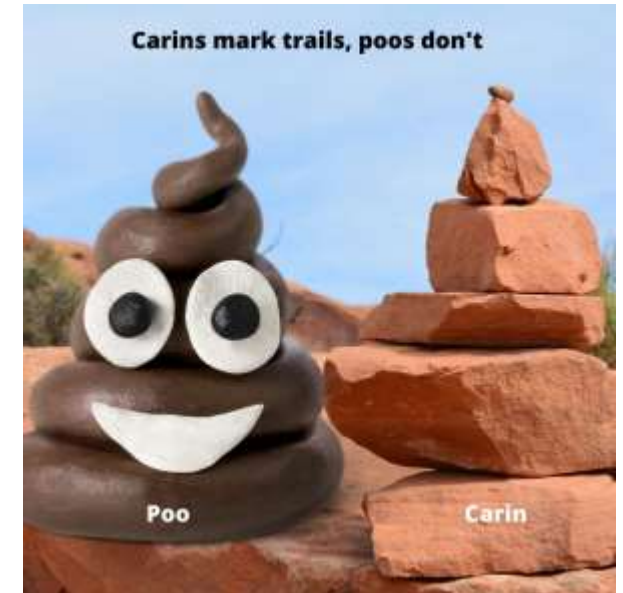
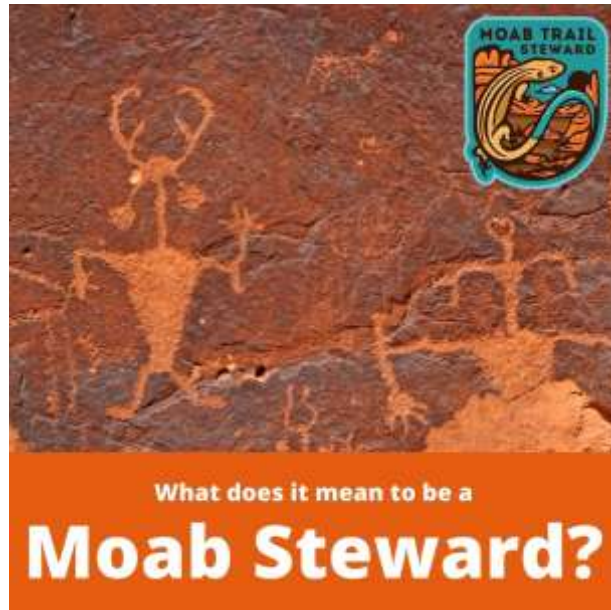
### 3. At the trailhead

- Trail Ambassadors
- Kiosks

### 4. General

- Developing content for motorized recreation groups

# Before visitors get to town (trip planning phase) Education on Social Media



# Before visitors get to town (trip planning phase) Mud Reports



# Before visitors get to town (trip planning phase) Partnership with Popular Apps

## AllTrails

The screenshot shows the AllTrails website interface for the 'Lazy EZ Loop' trail. The sidebar on the left contains the following information:

- Name:** Lazy EZ Loop (circled in orange)
- Park:** Bar M Trail System (1.51 mi) - Clear
- City:** Moab (7.57 mi)
- Region:** Utah, United States of America
- Distance:** 3.49999 miles
- Route type:** loop, out & back, point to point
- Difficulty:** easy, moderate, difficult, strenuous
- Usage:** light, moderate, heavy, extra heavy
- Season:** April, September
- Activities:** backpacking, bike touring, bird watching (circled in orange), camping, cross-country skiing, hiking, horseback riding, mountain biking, ohv/off-road driving, paddle sports, road biking, rock climbing, scenic driving

The main map area displays a topographic map with a red trail route. The route is labeled 'BAR-M-LOOP' and 'LAZY-EZ-LOOP'. A green dot indicates the start point. Below the map is an elevation profile showing the trail's altitude, ranging from approximately 4,571 feet to 4,732 feet.

**Incorrect Information**


- Name
- Usage
- Start Point/Parking
- Activities - I.e. Birdwatching
- Route - Leaves EZ and goes to Rusty Spur

# Responsible Recreation Business Program

- Currently under development in collaboration with Economic Development Department
- Will include all types of local businesses
- Main components include:
  - Education
  - Conservation
  - Resources
  - Community Presence
- Business can become certified as Platinum, Gold, or Silver, depending on how much of the criteria they fulfill
- Certified businesses will be recognized on DiscoverMoab website

In-town

# “Responsible Recreation” Newspaper/Publication Series



## RECREATE RESPONSIBLY


### TOWN

#### Share the Road

Keep our community safe:

- » Drive slowly in town
- » Share the road with bikes & yield to pedestrians at crosswalks
- » Minimize noise on town streets


Your adventure starts in neighborhoods.  
Thank you for being courteous!



### BACKCOUNTRY


#### Share the Trail

Moab's trails are multi-use. Expect to see many types of users on the trails. Learn Moab's local trail etiquette here



Use smartphone camera

Desert soils are fragile. Pull over to the trail's edge and stop to yield. Never bike or drive off-trail.



## RECREATE RESPONSIBLY

### TOWN

#### Help Eliminate Noise Pollution

- » Drive the speed limit, including OHV speed limit. Accelerate vehicles slowly
- » Trailer OHVs
- » Avoid driving through neighborhoods at night

Your adventure starts in neighborhoods.  
Thank you for being courteous!



Let the sounds of nature prevail.



### BACKCOUNTRY

Be courteous of other desert dwellers, including people and wildlife.

Loud music and noise disturbs other people and wildlife. Sound echos in the canyons and carries far away. On the trails and at camp, let the sounds of nature prevail.



# “Responsible Recreation” Newspaper/Publication Series

## RECREATE RESPONSIBLY

In 7 weeks learn the 7 best-practices to enjoy Moab's outdoors responsibly.



### 1 Plan Ahead & Prepare

- » Check the weather forecast & trail conditions
- » Camping? Know local regulations
- » Know your route. Cell phone service is unreliable in this area

**Pack** 4 Liters of water per person per day  
Electrolytes & plenty of snacks  
Layers for changing weather conditions

Use smartphone camera

Visiting Arches National Park? Reservations are required between 6 am and 5 pm



## RECREATE RESPONSIBLY

In 7 weeks learn the 7 best-practices to enjoy Moab's outdoors responsibly.



### 4 Leave What You Find

Respect cultural sites such as rock imagery. These sites are sacred to modern day Indigenous groups and are an irreplaceable part of our local history.

Leave rocks as you find them for others to enjoy in the landscape - do not scratch, write on them, or construct rock piles.

Use smartphone camera



## RECREATE RESPONSIBLY

In 7 weeks learn the 7 best-practices to enjoy Moab's outdoors responsibly.



### 6 Respect Wildlife

The desert is harsh, and wildlife have limited energy stores to run from predators. Always have dogs under control and never chase or feed wildlife.

Loud music and noise stresses wildlife - please let the sounds of nature prevail on the trails. We are visitors to their home.





# Trail Ambassador Program

First full season



# Trail Ambassador Program

Number of Informative Interactions: 17,062

Number of Preventative-SAR: 4,112

Total Number of Encounters: 27,117



# Wag Bag Initiative

Partnering with Solid Waste Special Services District, Southeast Utah Health Department, and Economic Development Deptment to educate about wag bag use and disposal.



**NO**  
NO BIOHAZARDOUS WASTE      NO WAG BAGS

**HUMAN WASTE**

DISPOSE OF WAG BAGS AT DESIGNATED WHITE CONTAINERS AT THE FOLLOWING LOCATIONS:

<b>Lions Park</b> South side of intersection of Hwy191 and Hwy128 ("River Road") Available 24/7	<b>Southeast Utah Health Dept</b> 575 Kane Creek Blvd, Moab, UT 84532 Available 24/7 (435) 259-5602	<b>Thank you for preserving Moab's backcountry</b>
<b>Grand County Transit Hub</b> North side of intersection of Hwy191 and Hwy128 ("River Road") Available 24/7	<b>Wastewater Reclamation Facility</b> 1070 W 400 N, Moab, UT 84532 7AM- 5PM, M-F (435) 259-5577	<b>Canyonlands Solid Waste Transfer Station</b> 2295 US-191, Moab, UT 84532 Available 24/7 (435) 259-8314



**WAG BAGS**  
Make every adventure cleaner

#packoutpoo

# GCATT Training, Networking, & Development

- Professional Trail Builders Association's Sustainable Trails Conference in Bentonville, AR
- Science Certified
- Move Utah Conference presenter
- Wilderness First Aid Certification
- Work Week at the Creek
- Escalante Visitor Center visit
- American Trails Webinars: Trail Ambassador programs, trail user conflict solutions, accessible trail design



# PTBA Stone Shaping Workshop





Bentonville, AR  
town trail system



Education efforts  
in nearby areas



# Upcoming

2022 Summer Field Season with  
Forest Service

Will be hiring Summer Trail Technicians!

