

MOAB UMTRA PROJECT

URANIUM MILL TAILINGS REMEDIAL ACTION

MOAB, UTAH



Panoramic view of Moab UMTRA Site (10/17/2022)



Prepared by:
Jessica Thacker
UMTRA Liaison/Technical Inspector

MTPSC Status Update

January 24, 2023

INTRODUCTION & PURPOSE

The UMTRA Liaison/Technical Inspector position, as established by Grand County Resolution 3198 and located within the Grand County Planning and Community Development Department (P&CD), serves as an independent and neutral figure regarding activities utilizing a conditional use permit (CUP) through Grand County.

The UMTRA Liaison/Technical Inspector provides observations, reports, and other applicable duties to the following sites:

- The Moab UMTRA Site and associated Crescent Junction Disposal Site
- Oilfield Water Logistics at Danish Flats
- Westwater Farms/Armada Water Solutions at Harley Dome
- IACX Helium Processing Plant at Harley Dome

The UMTRA Liaison/Technical Inspector works with a variety of entities and committees to ensure full transparency and accurate reporting. This position is currently funded through Grant DE-EM0005196 and has a period of performance through February 4, 2025.

UMTRA SITE MAP



Google Maps – Image not to scale

OBSERVATION POINT #1



OCT 2022



DEC 2022

OBSERVATION POINT #2

OCT 2022

DEC 2022



OBSERVATION POINT #3

OCT 2022



DEC 2022



OBSERVATION POINT #4

OCT 2022

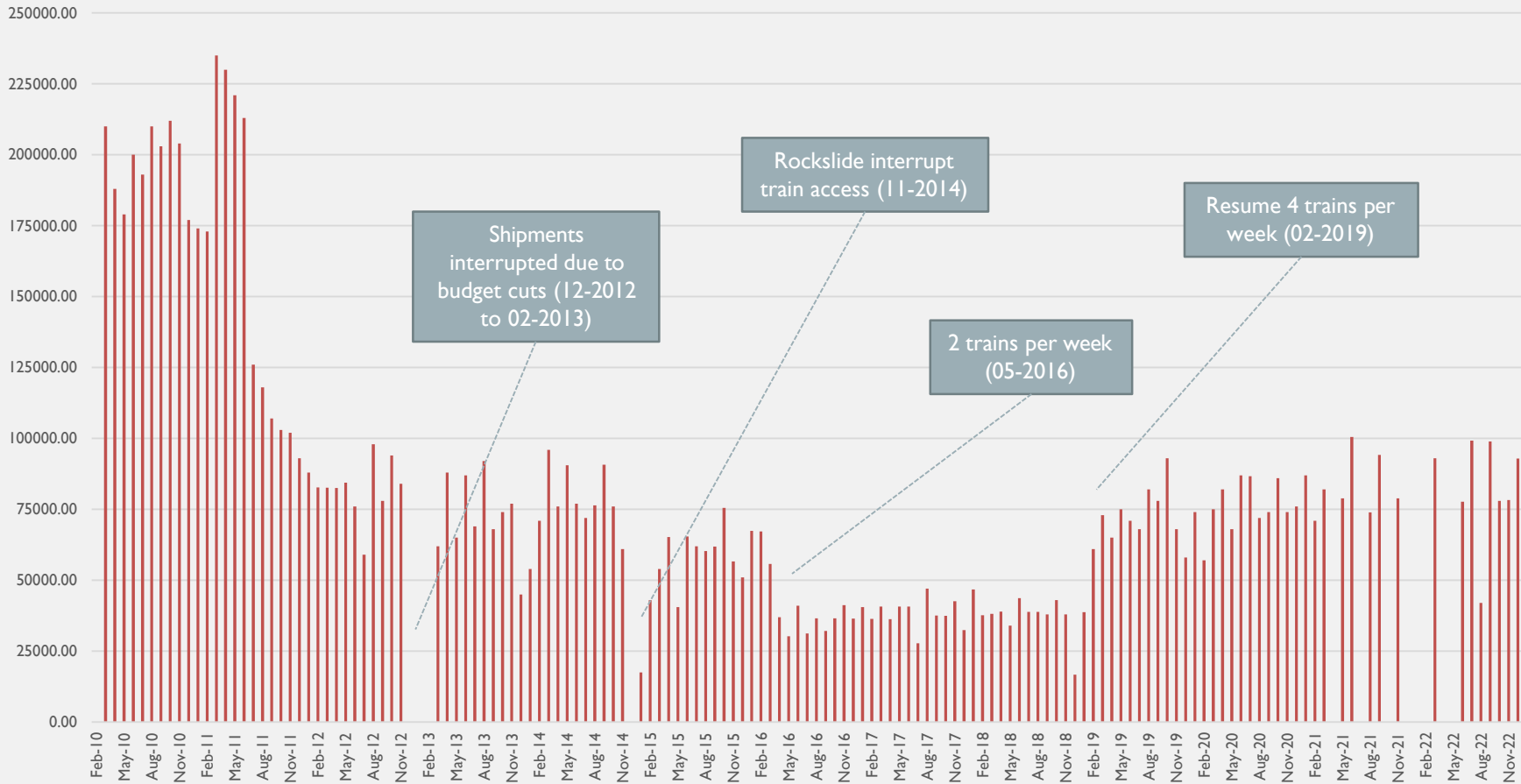


DEC 2022



TAILINGS SUMMARY

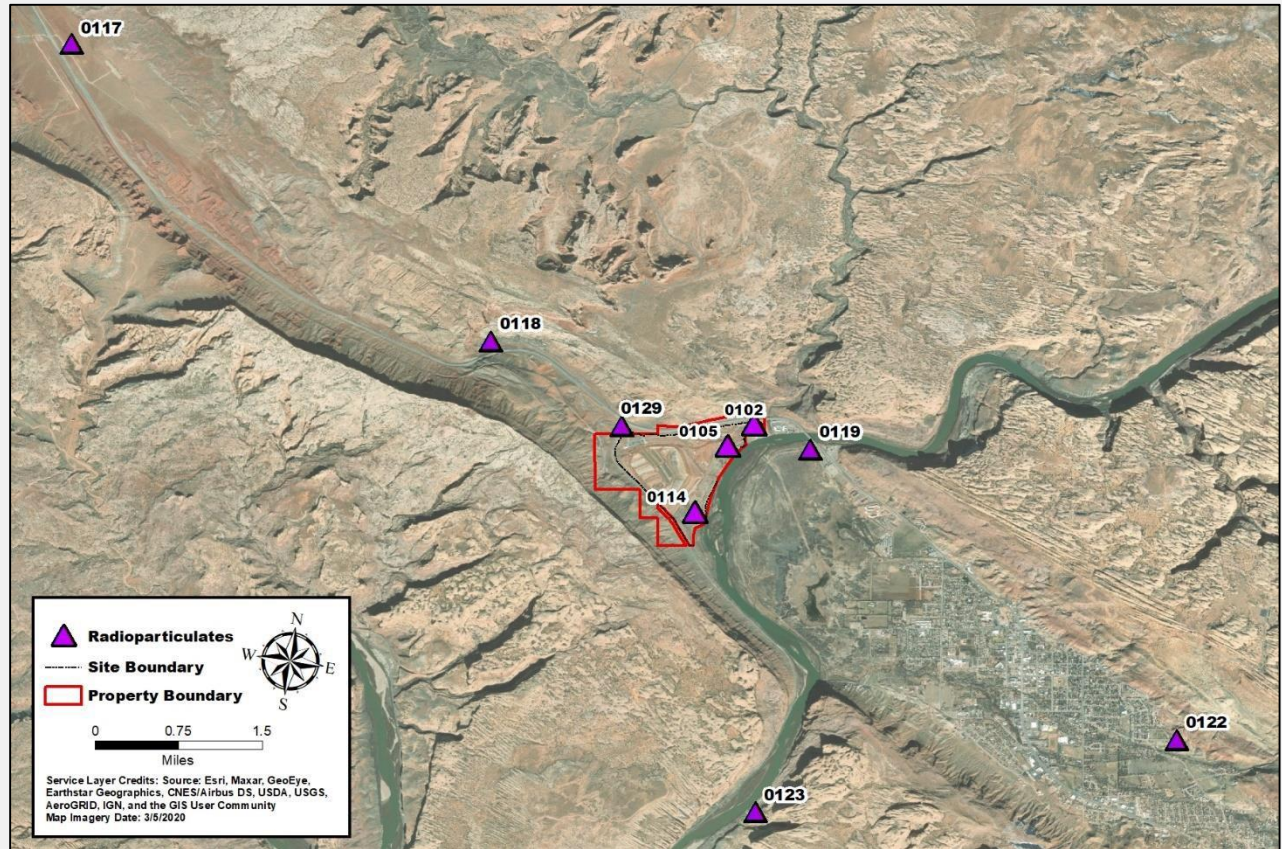
Tailings moved (in tons) over time



- At the end of December 2022, approximately 13.1 million tons of tailings and mill debris has been shipped to the Crescent Junction site for disposal. Approximately 92,912 tons of tailings and mill debris were moved in December 2022 (end of 4Q22).
- Indicates that 81.9% of the estimated 16 million total tonnage contained at the Moab UMTRA site has been removed since the beginning of the project.
- The Moab UMTRA Project continues to operate on a regular schedule of four (4) trains per week.

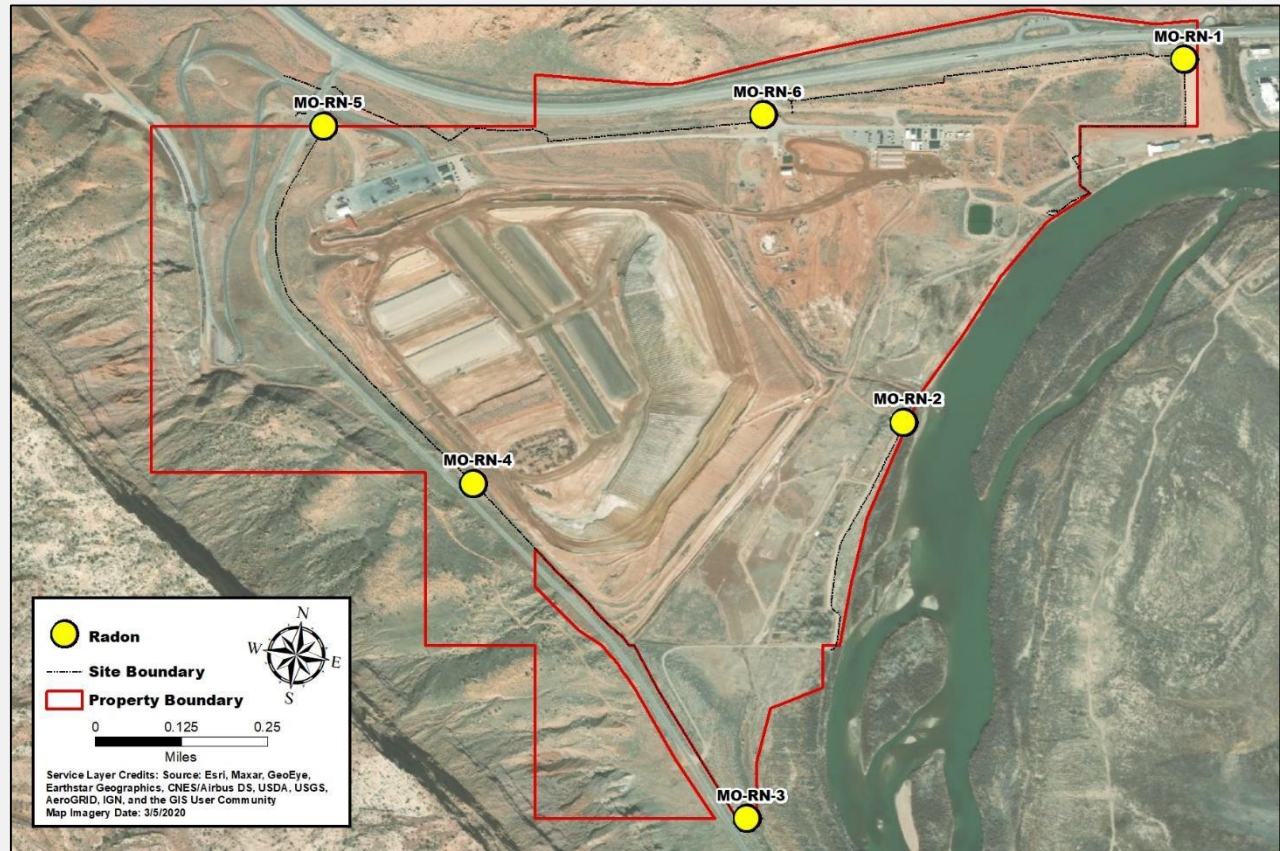
RADIOPARTICULATES 2Q22 MONITORING STATIONS

Station ID	Result (mrem)
MSP-0102-RP	1.06
MSP-0105-RP	1.30
MSP-0114-RP	2.30
MSP-0117-RP	0.82
MSP-0118-RP	1.23
MSP-0119-RP	0.92
MSP-0122-RP	0.61
MSP-0123-RP	0.64
MSP-0129-RP	2.73



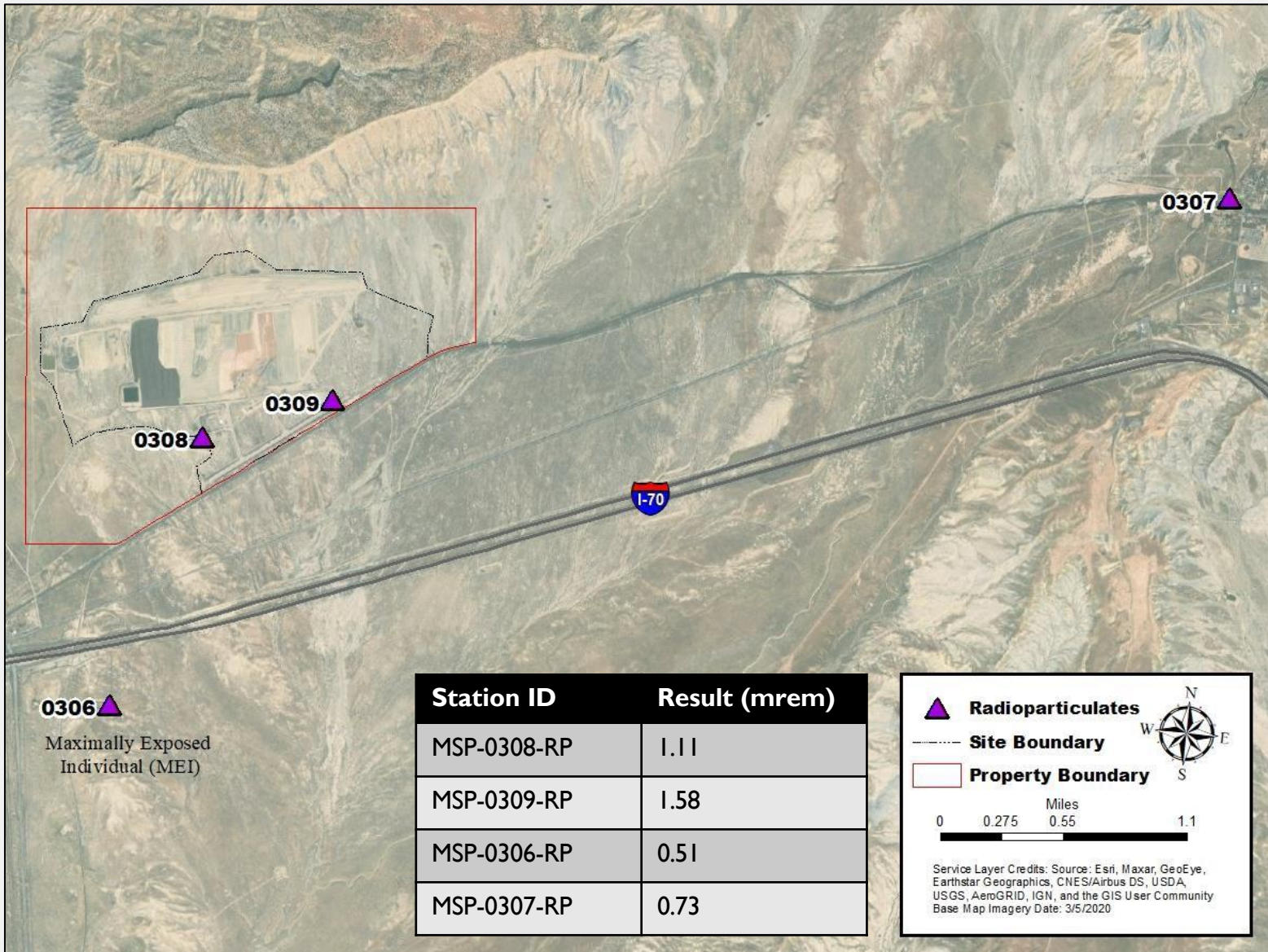
RADON - 2Q22 MONITORING STATIONS

Station ID	Result (pCi/L)
MO-RN-1	1.03
MO-RN-2	2.73
MO-RN-3	1.17
MO-RN-4	1.00
MO-RN-5	0.92
MO-RN-6	2.00



RADIOPARTICULATES – 2Q22


CRESCENT JUNCTION SITE



0306 ▲
Maximally Exposed Individual (MEI)

Station ID	Result (mrem)
MSP-0308-RP	1.11
MSP-0309-RP	1.58
MSP-0306-RP	0.51
MSP-0307-RP	0.73

▲ Radioparticulates
 - - - Site Boundary
 □ Property Boundary


 N
W E
S

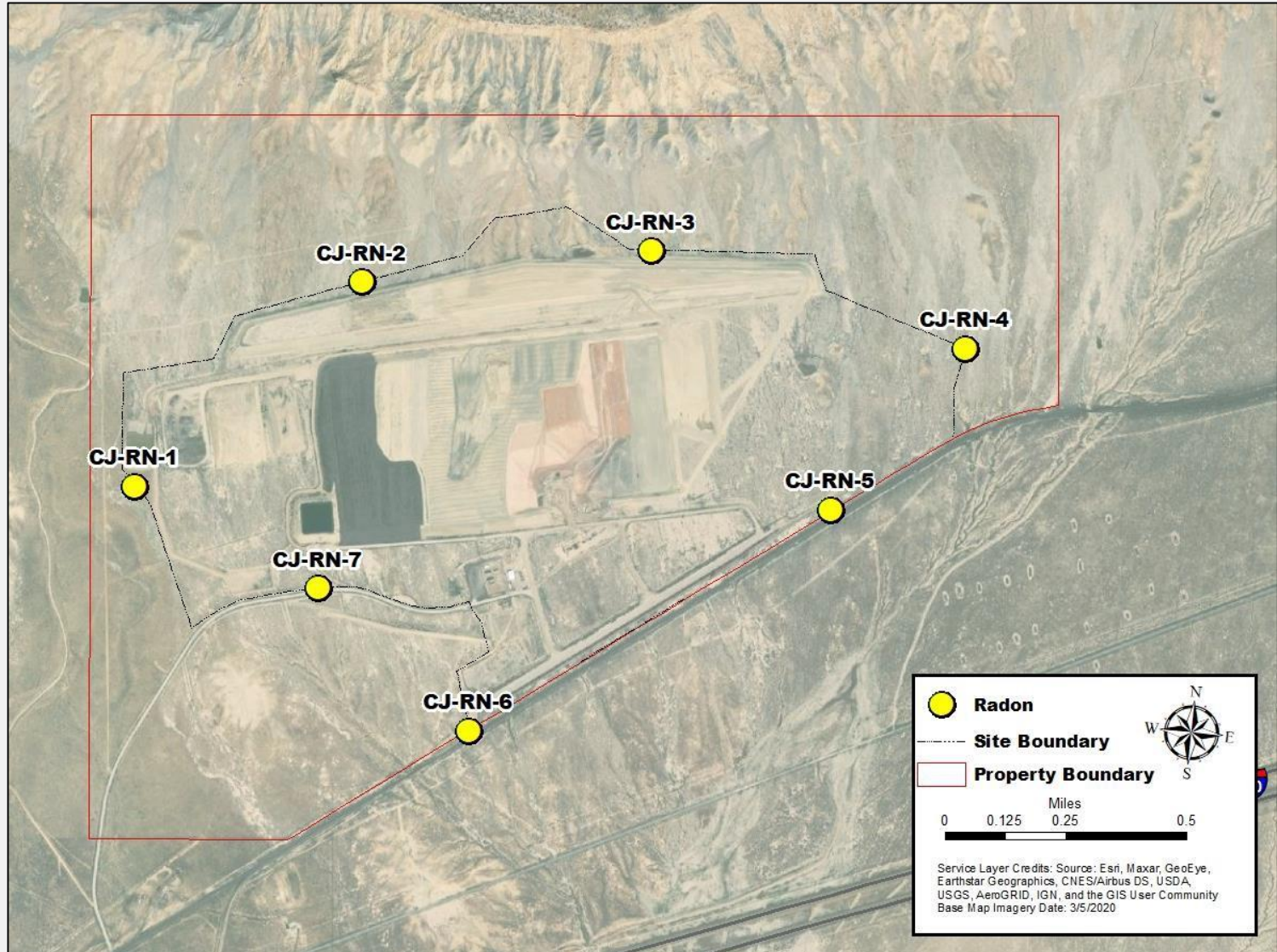
Miles
 0 0.275 0.55 1.1

Service Layer Credits: Source: Esri, Maxar, GeoEye, Earthstar Geographics, CNES/Airbus DS, USDA, USGS, AeroGRID, IGN, and the GIS User Community
 Base Map Imagery Date: 3/5/2020

RADON – 2Q22

CRESCENT JUNCTION SITE

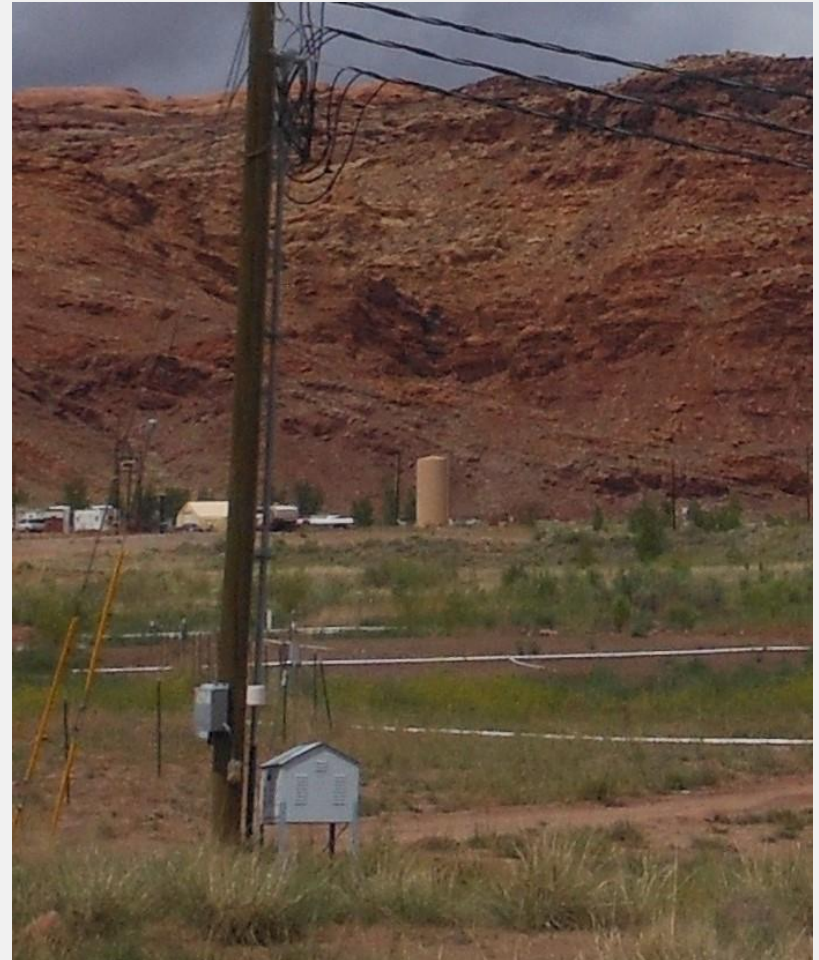
Station ID	Result (pCi/L)
CJ-RN-1	At or Below Background
CJ-RN-2	At or Below Background
CJ-RN-3	At or Below Background
CJ-RN-4	0.11
CJ-RN-5	0.93
CJ-RN-6	Not enough data*
CJ-RN-7	Not enough data*



*Not enough data to calculate the annual average

AIR MONITORING DATA SUMMARY

- **Radioparticulates (for both sites):**
 - 5 monitoring stations down from 1Q22 results
 - 6 monitoring stations up from 1Q22 results
 - 1 monitoring station remained unchanged from 1Q22 results
- **Radon (for both sites):**
 - 10 monitoring stations down from 1Q22 results
 - No monitoring stations up from 1Q22 results
 - 3 monitoring station remained unchanged from 1Q22 results
- **The full 1Q22 report has been finalized and can be found here:**
<https://www.energy.gov/sites/default/files/2022-11/1Q22%20Air%20Monitoring%20Report.pdf>



GROUNDWATER REMEDIATION

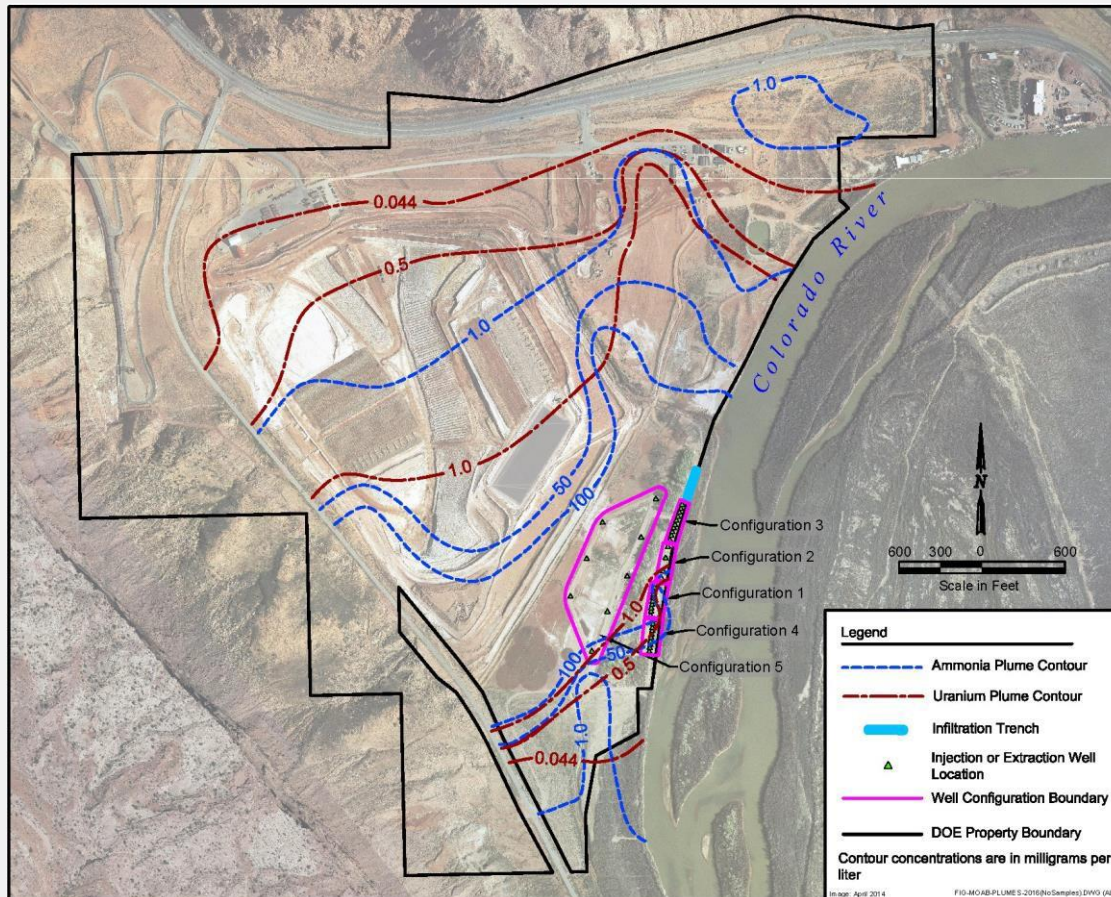


Image: https://www.gjem.energy.gov/general/interim_gw_action.htm

- A total of 10 extraction wells designed to reduce the amount of ammonia and uranium that discharges to the river were installed during Configuration 1. Four (4) additional configurations of wells have been added since, for a current total of 42 wells.
- Groundwater extraction is through Configuration 5 wells, which are located closer to the tailings pile.
- Over the life of the Project, extraction has prevented 977,467 pounds of ammonia and 5,558 pounds of uranium from reaching the river.
- Freshwater (diverted river water) is injected through wells in Configuration 4 as an additional way of minimizing the discharge of ammonia to the Colorado River. So far in 2022, more than 9,839,736 gallons of water has been injected.

RESOURCES

Online

- <https://www.gjem.energy.gov/>
- <https://www.grandcountyutah.net/257/Moab-UMTRA-Project>
- <https://www.grandcountyutah.net/206/Moab-Tailings-Project-Site-Futures-Comm>
- Moab UMTRA Project Five-Year Site Plan FY's 2022-2026 (DOE):
<https://www.gjem.energy.gov/documents/Five-YearSitePlan22.pdf>
- Moab UMTRA Project Groundwater and Surface Water Monitoring Report July through December 2021 (DOE):
https://www.gjem.energy.gov/documents/gw_water/monitor/MonitRpt_2ndHalf2021.pdf

Public meetings

- *Moab Tailings Project Steering Committee, quarterly (April 25, July 25 and Oct 24, 2023)*
- *Site Futures Committee, 2013 and 2018*

UMTRA Reading Room (Library)

Contact Grand County's UMTRA Liaison

- jthacker@grandcountyutah.net

QUESTIONS?