

MOAB UMTRA PROJECT

URANIUM MILL TAILINGS REMEDIAL ACTION

MOAB, UTAH



Panoramic view of Moab UMTRA Site (October 2024)



Prepared by:

Jessica Thacker

UMTRA Liaison/Technical Inspector

MTPSC Status Update

01.28.2025

INTRODUCTION & PURPOSE

The UMTRA Liaison/Technical Inspector position, as established by Grand County Resolution 3198 and located within the Grand County Planning and Community Development Department (P&CD), serves as an independent and neutral figure regarding activities utilizing a conditional use permit (CUP) through Grand County.

The UMTRA Liaison/Technical Inspector provides observations, reports, and other applicable duties to the following sites:

- The Moab UMTRA Site and associated Crescent Junction Disposal Site
- Oilfield Water Logistics at Danish Flats
- IACX Helium Processing Plant at Harley Dome

The UMTRA Liaison/Technical Inspector works with a variety of entities and committees to ensure full transparency and accurate reporting. This position is currently funded through Grant DE-EM0005196 and has a period of performance through February 4, 2026.

UMTRA SITE MAP



Google Maps – Image not to scale

OBSERVATION POINT #1



OBSERVATION POINT #2

OCT 2024

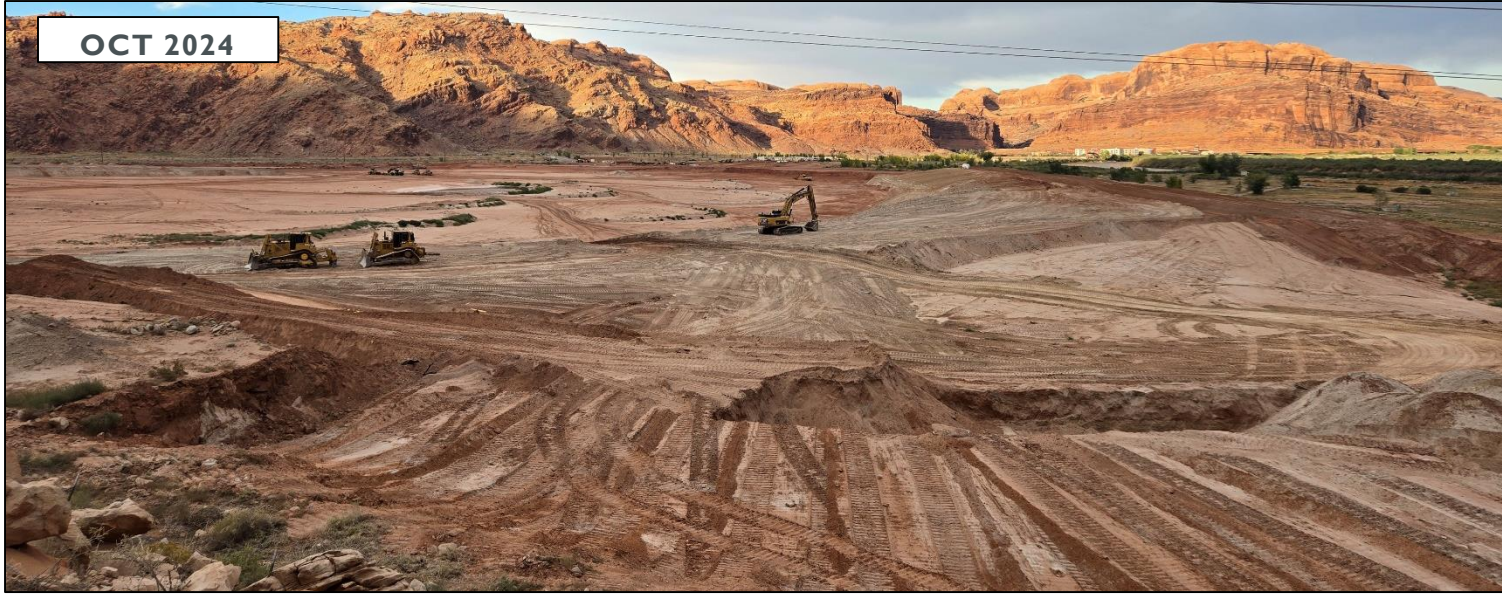


DEC 2024



OBSERVATION POINT #4

OCT 2024



DEC 2024



OBSERVATION POINT #5

OCT 2024



DEC 2024



OBSERVATION POINT #6

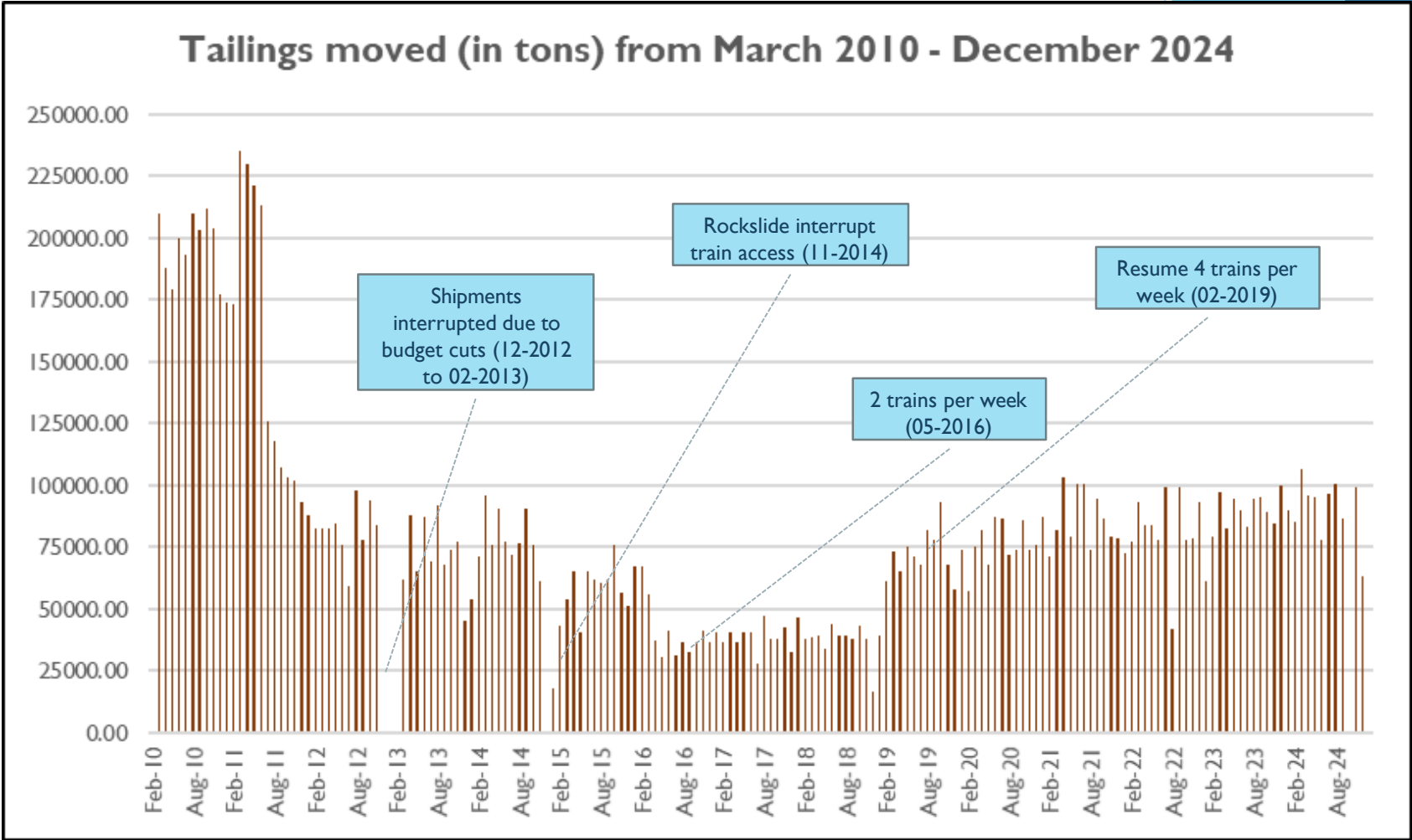
OCT 2024



DEC 2024



TAILINGS SUMMARY - OVERALL



- At the end of December 2024, approximately 15.2 million tons of tailings and mill debris has been shipped to the Crescent Junction site for disposal. Approximately 62,862 tons of tailings and mill debris were moved in December 2024 (end of 4Q24). Please note that at the time of this presentation, data for October 2024 was unavailable and therefore, is not reflected in the above graph.
- Indicates that 95% of the estimated 16 million total tonnage contained at the Moab UMTRA site has been removed since the beginning of the project.
- The Moab UMTRA Project continues to operate on a regular schedule of four (4) trains per week.

GROUNDWATER REMEDIATION

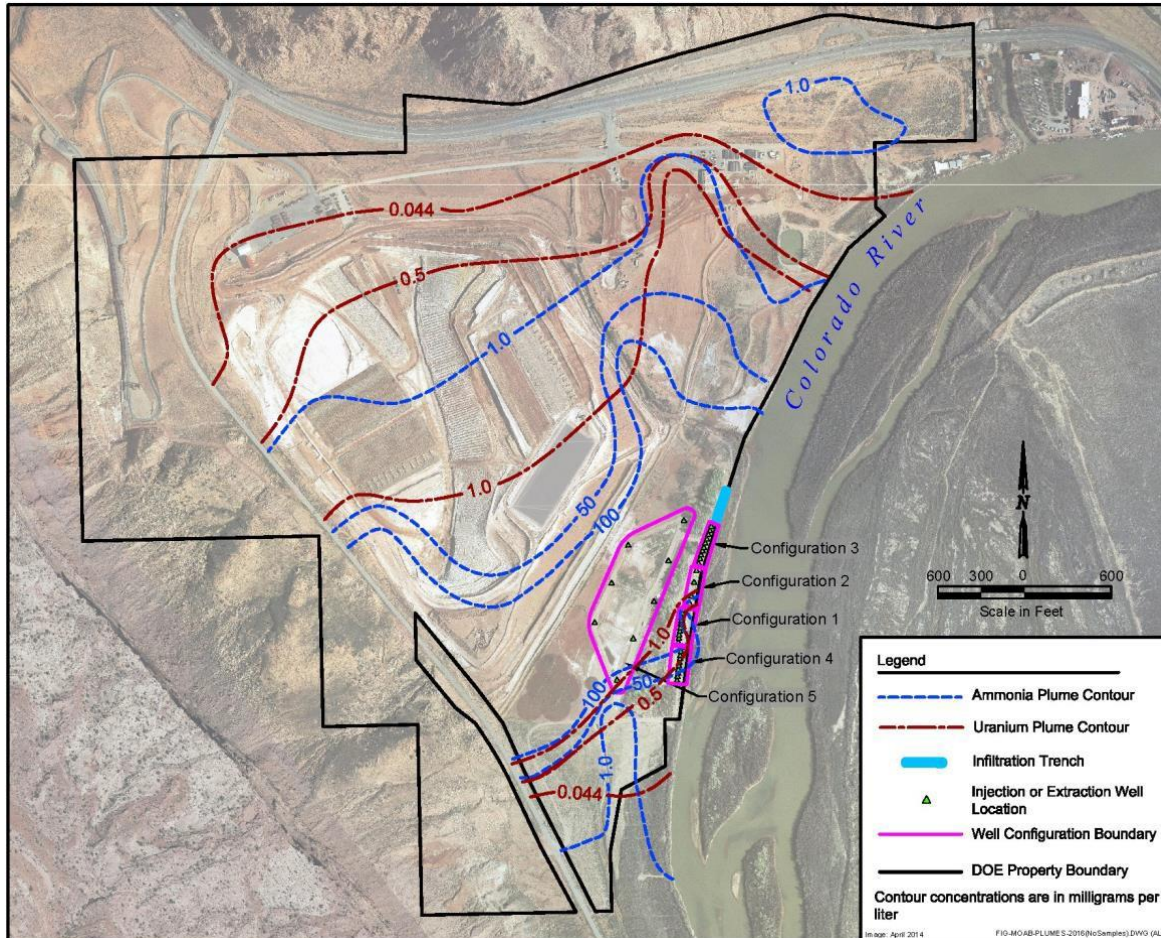
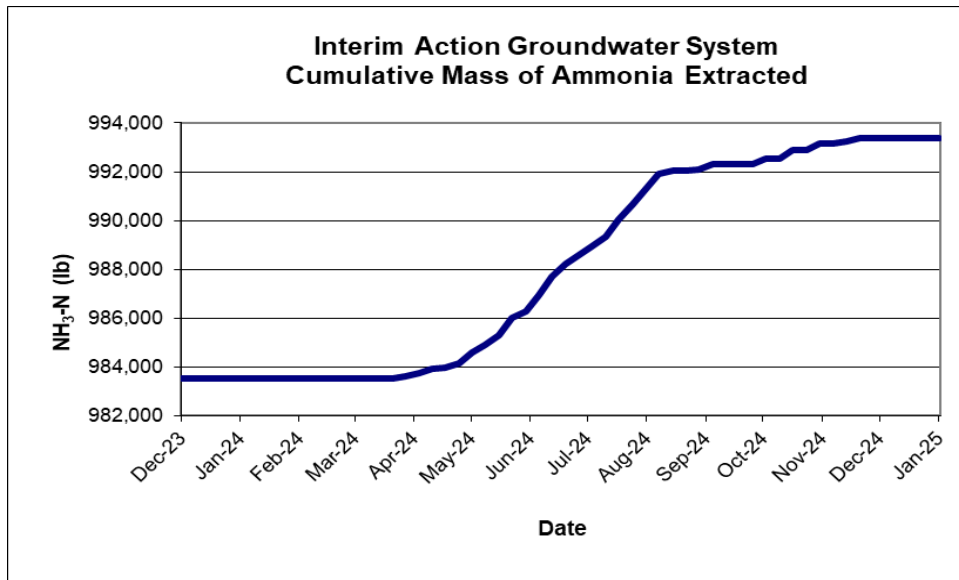


Image: https://www.gjem.energy.gov/general/interim_gw_action.htm

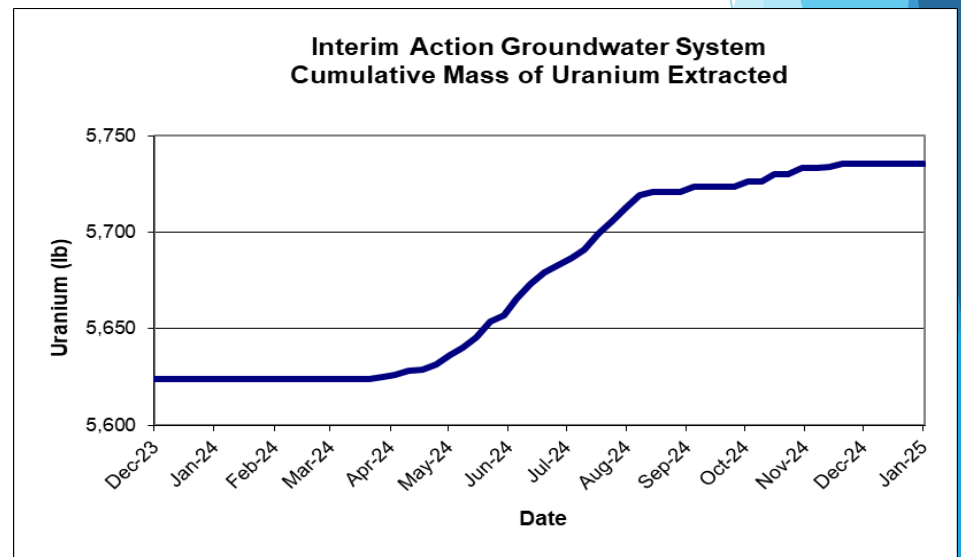
- In 2003, DOE implemented an interim action system at the Moab site to address concerns regarding elevated ammonia and uranium concentrations in groundwater discharging to the Colorado River. A total of five well configurations are used to reduce the amount of ammonia and uranium that discharges to the river.
- Groundwater extraction is through Configuration 5 wells, which are located closer to the tailings pile.

GROUNDWATER REMEDIATION

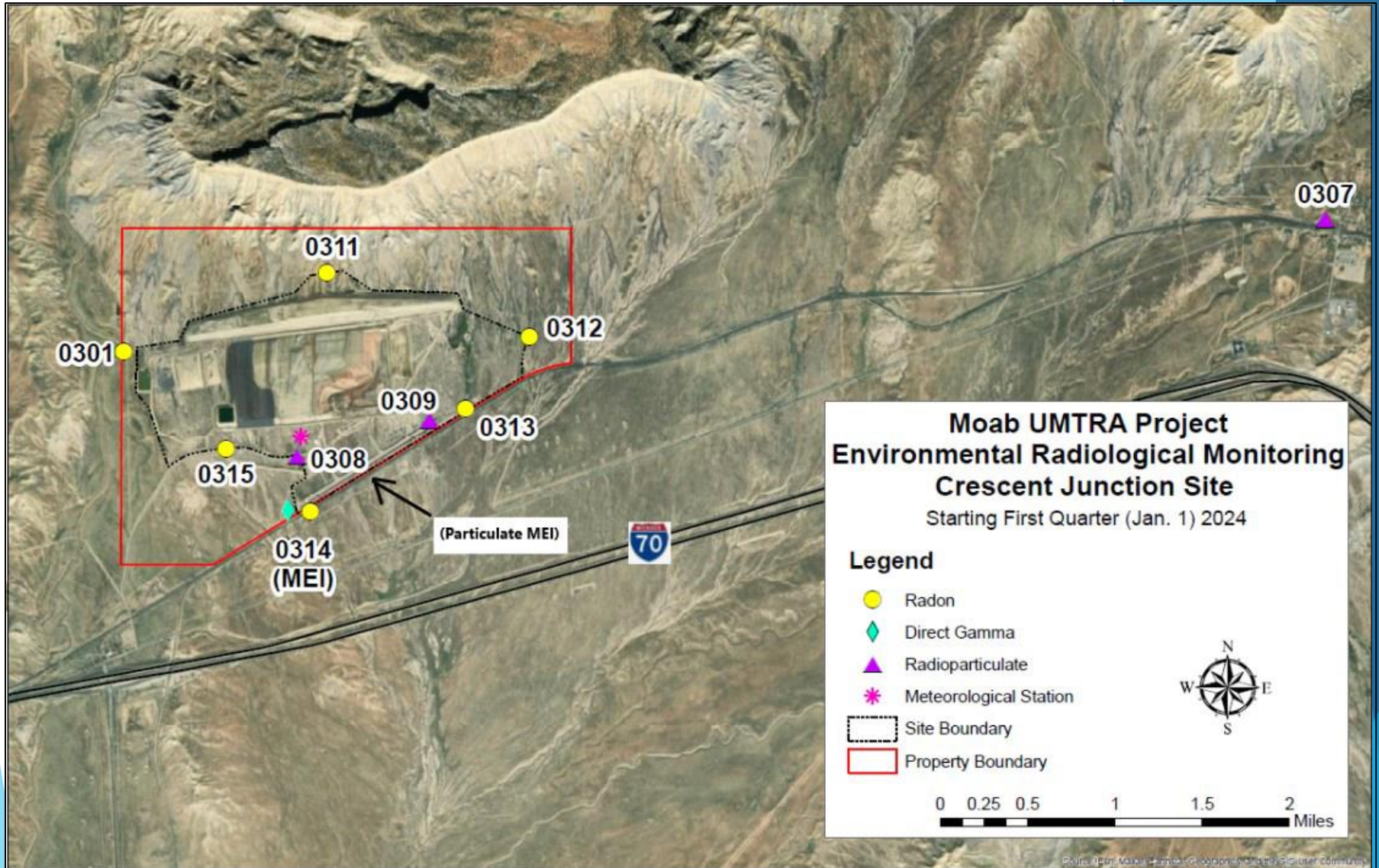


Over the life of the Project, extraction has prevented 993,397 pounds of ammonia and 5,736 pounds of uranium from reaching the river.

Freshwater (diverted river water) is injected through wells in Configuration 4 as an additional way of minimizing the discharge of ammonia to the Colorado River. So far in 2024, more than 284.3 million gallons of water has been injected.



AIR MONITORING MAPS - CRESCENT JUNCTION SITE



AIR MONITORING & GROUNDWATER REMEDIATION DATA SUMMARY 1Q24 VS. 2Q24

Ammonia Extraction (in lbs)	JAN-24	FEB-24	MAR-24	APR-24	MAY-24	JUNE-24	JULY-24	AUG-24	SEPT-24	OCT-24	NOV-24	DEC-24
	983535	983535	983627	984568	984568	988591	991299	992070	992522		993397	993397
Difference (in lbs)	0	0	92	941	0	4023	2708	771	452	0	0	0

Uranium Extraction (in lbs)	JAN-24	FEB-24	MAR-24	APR-24	MAY-24	JUNE-24	JULY-24	AUG-24	SEPT-24	OCT-24	NOV-24	DEC-24
	5624	5624	5625	5636	5636	5683	5713	5721	5726		5736	5736
Difference (in lbs)	0	0	1	11	0	47	30	8	5	0	0	0

Moab Site - Radioparticulates (mrem)			
Station No.	1Q24	2Q24	Diff
0102 (MEI)	0.43	0.2	-0.23
0105	0.68	0.46	-0.22
0114	0.54	0.56	0.02
0117	0.23	0.17	-0.06
0118	0.62	0.41	-0.21
0119	0.53	0.24	-0.29
0122	0.33	0.17	-0.16
0123	0.46	0.16	-0.3
0129	0.71	0.98	0.27

Moab Site - Radon (pCi/L)			
Station No.	1Q24	2Q24	Diff
0102 (MEI)	0.95	0.59	-0.13
0130	1	0.89	-3.71
0109	0.84	1.1	-0.11
0112	0.78	0.81	0
0113	1.2	0.76	-0.08
0106	2.6	1.4	-0.16

Crescent Junction Site - Radioparticulates (mrem)			
Station No.	1Q24	2Q24	Diff
0306	0.51	0.18	-0.33
0307	0.41	0.17	-0.24
0308	0.37	0.23	-0.14
0309	0.5	0.37	-0.13

Crescent Junction Site - Radon (pCi/L)			
Station No.	1Q24	2Q24	Diff
0301	0.35	0.22	-0.13
0311	3.9	0.19	-3.71
0312	0.43	0.32	-0.11
0313	0.65	0.65	0
0314 (MEI)	0.51	0.43	-0.08
0315	0.62	0.46	-0.16

RESOURCES

Online

- <https://www.energy.gov/em/moab/moab-umtra-homepage>
- <https://www.grandcountyutah.net/257/Moab-UMTRA-Project>
- <https://www.grandcountyutah.net/206/Moab-Tailings-Project-Site-Futures-Commi>
- Moab UMTRA Project Five-Year Site Plan FY's 2022-2026 (DOE): <https://www.gjem.energy.gov/documents/Five-YearSitePlan22.pdf>
- Moab UMTRA Project Surface Water and Groundwater Project Documents <https://www.energy.gov/em/moab/surface-water-and-groundwater>
- **Public meetings**
- *Moab Tailings Project Steering Committee, quarterly (April 22, July 22, and October 28)*
- *Site Futures Committee: 2013, 2018, and 2023*
- **UMTRA Reading Room (Library)**
- **Contact Grand County's UMTRA Liaison at** jthacker@grandcountyutah.net

QUESTIONS?