

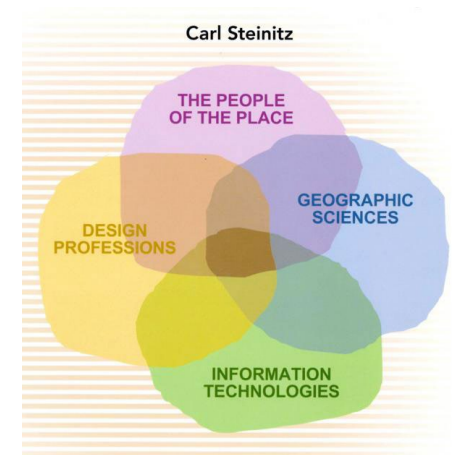
Intro to GeodesignHub Workshop

Workshop Systems

Projects and Policies

Change Team Plans

Collaborative Masterplan

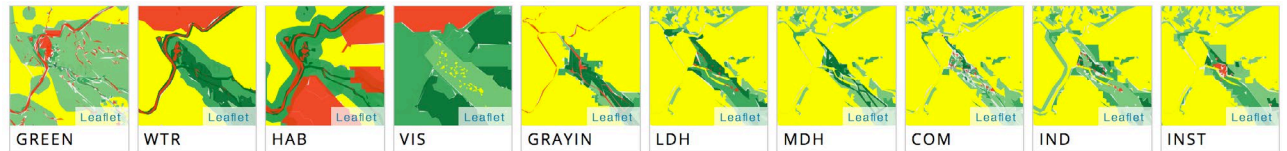
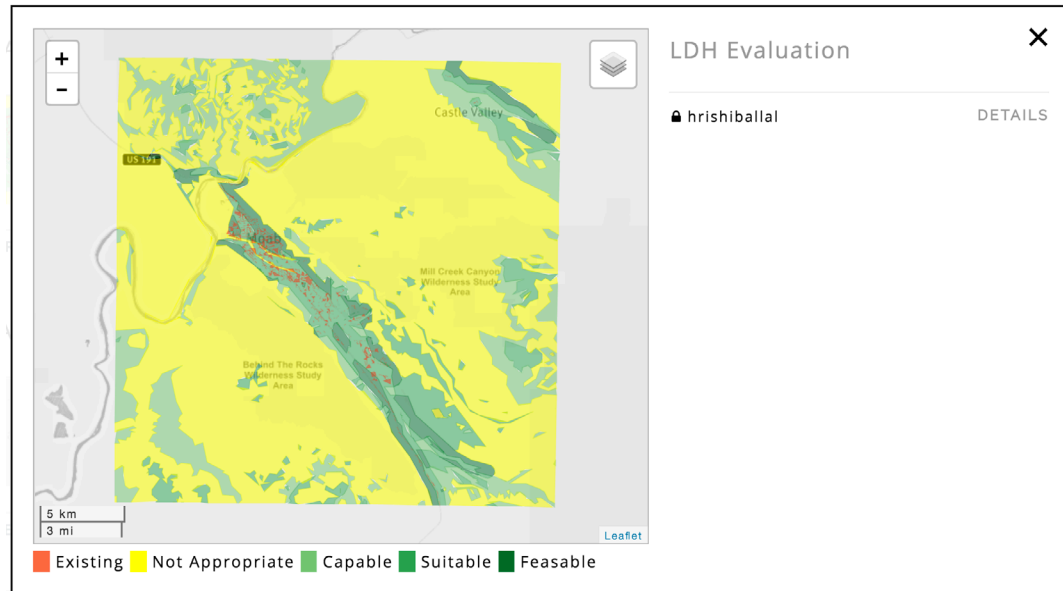


Intro to GeodesignHub Workshop

Determine Workshop Systems

- Will determine initial evaluation maps
- Will determine the types of projects and policies that can be created

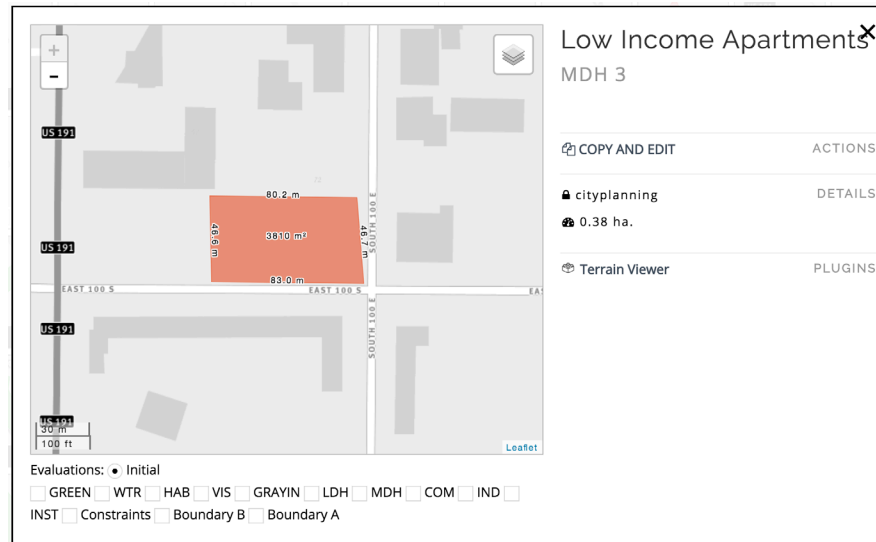
Evaluation Maps - Evaluation maps are created for each of the chosen systems. These are used to describe the existing conditions within the workshop boundary. They inform the creation of projects and policies by suggesting how suitable areas might be for intervention.



Intro to GeodesignHub Workshop

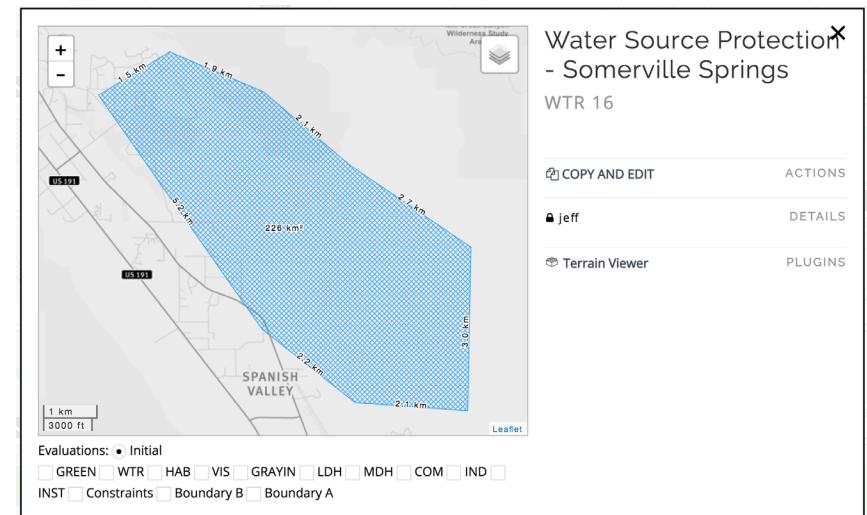
Create Projects and Policies

- Projects are proposals requiring construction or manipulation of the landscape
- Policies are proposals that suggest changes in regulation/community behavior



Project Proposal Example

Policy Proposal Example

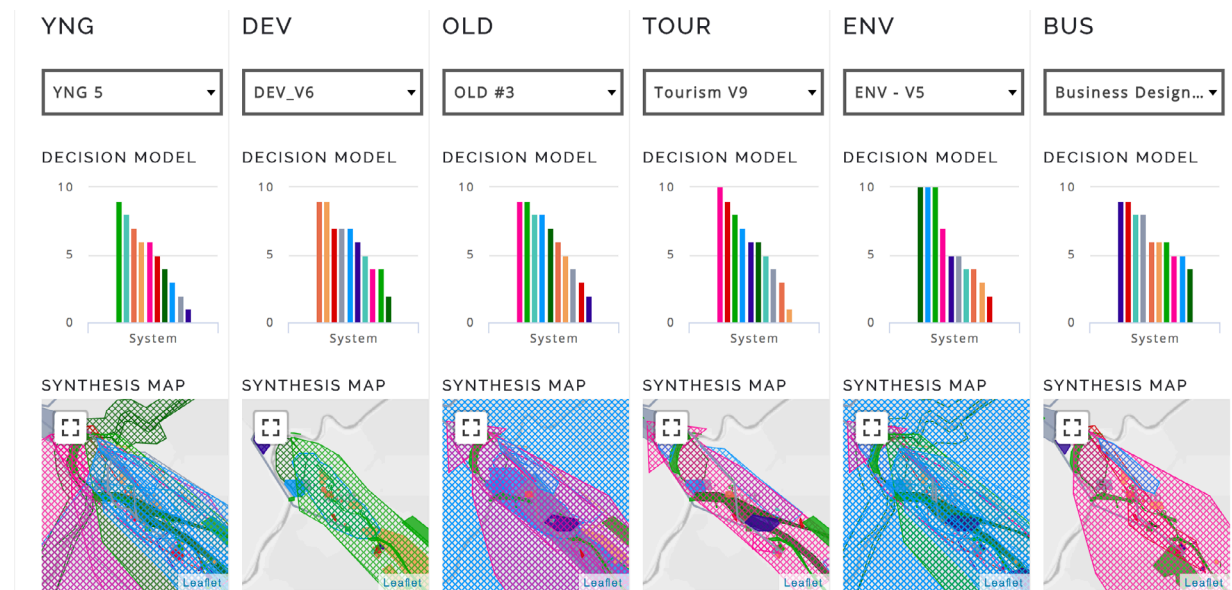


Intro to GeodesignHub Workshop

Develop Change Team Masterplans

- Workshop Participants separate into groups with a specific focus to create biased masterplans
- Tourist/Business/Environmental/Younger Persons/Older Persons/Developers

Change Team Masterplans - Any number of change teams can be selected. We might choose to use a business team, an environmental team, and a housing team. Teams will create masterplans by selecting projects and policies that align with the values of their teams focus.



Intro to GeodesignHub Workshop

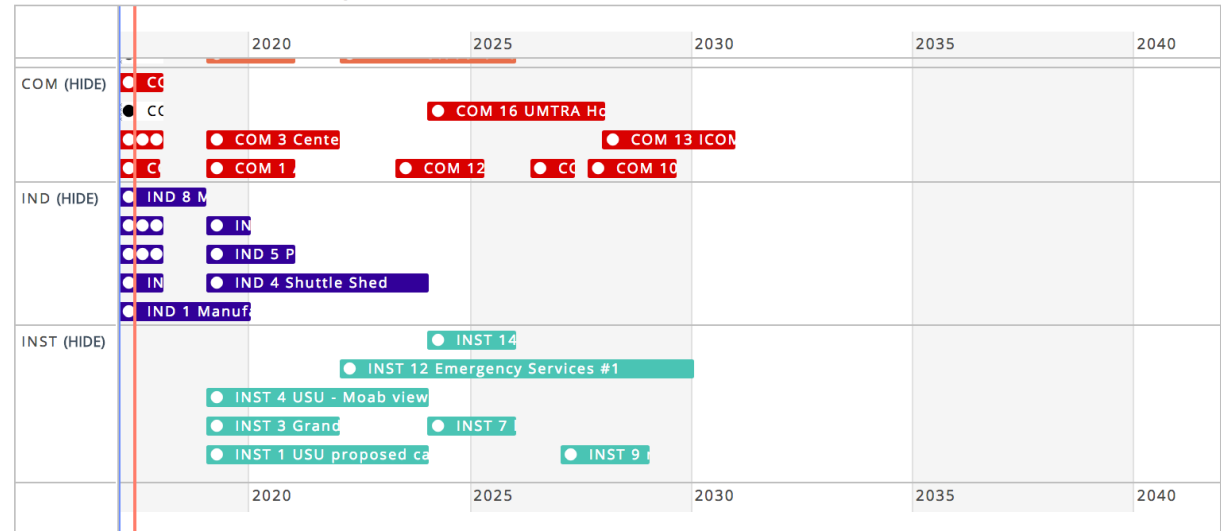
Create a Collaborative Masterplan

- Change team representatives collaborate to create a final Masterplan

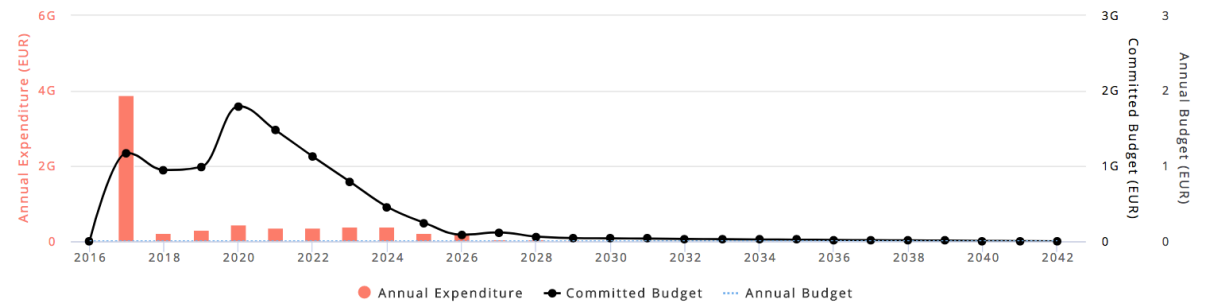
Final Masterplan - Representatives from each change team will work together to create a masterplan. This plan will represent the collective values of the change teams. Where conflicts in values exist representatives will work to find compromises. Once a plan is in place, a timeline and budget for the implementation of the plan can be developed

DESIGN TIMELINE

● Low Cost ●● Medium Cost ●●● High Cost



DESIGN BUDGET AND COSTS



Equitable Housing Plan Moab 2050



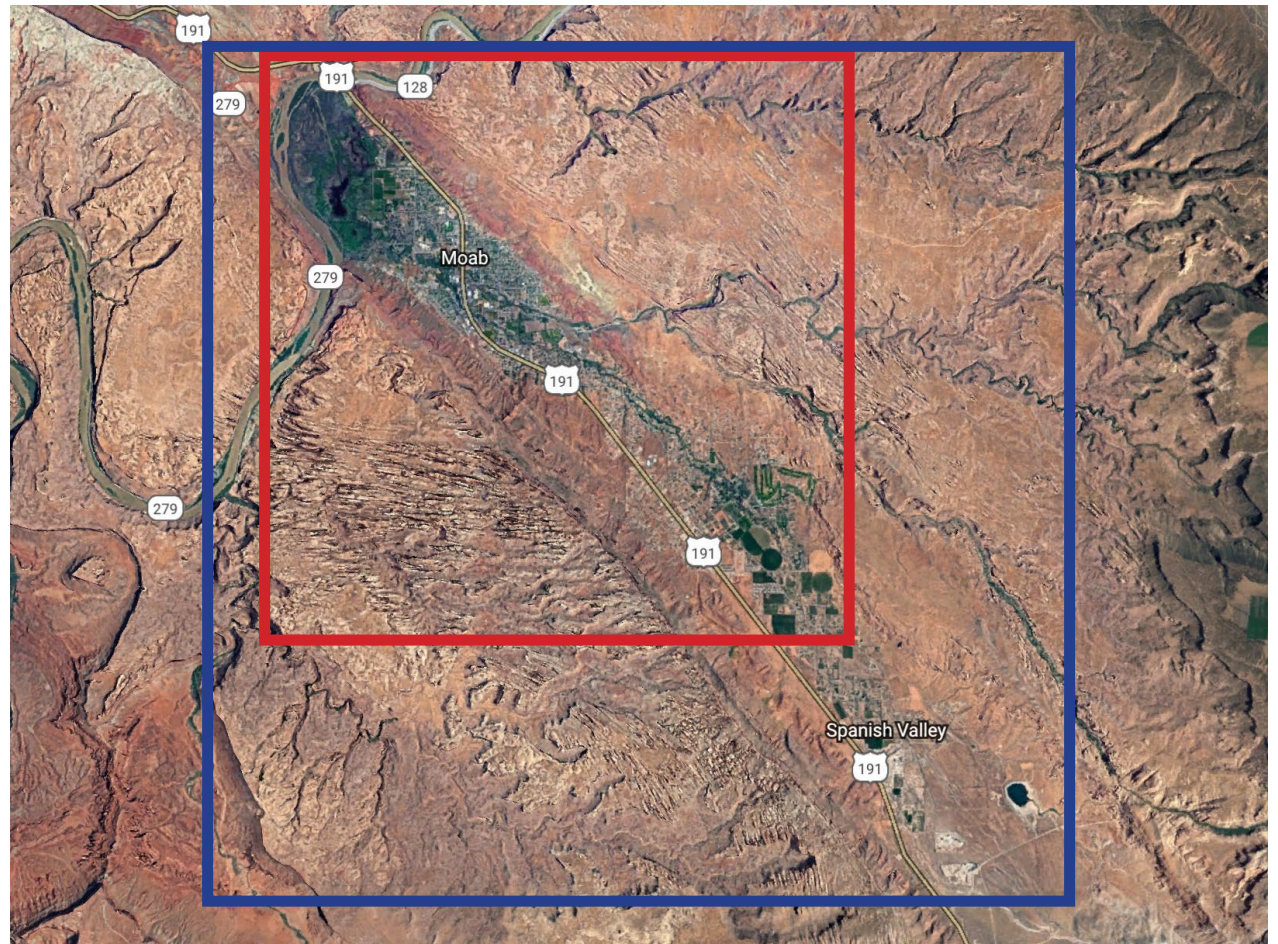
Discussion Outline

- **Identify the Workshop Boundary**
- **Identify systems to include in the workshop**
- **Discuss the Project Specifics**
- **Discuss Workshop Dates and Workflow**
- **Discuss the Workshop Format**
- **Discuss the Workshop Targets and Goals**
- **Workshop Funding**

What should be the Boundaries of the Workshop Area?

Potential Boundaries

- Moab City Focus
- Spanish Valley Focus



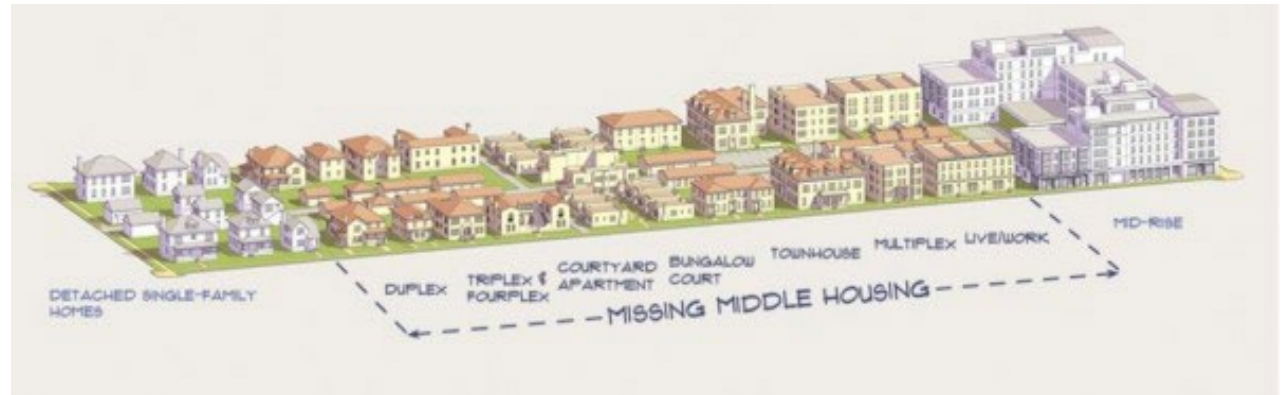
Which Systems should we include in the Workshop?

Higher Density Housing

- Missing Middle Housing types Identified in the *Moab Area Affordable Housing Plan 2017*

Lower Density Housing

- Detached Single-Family Homes

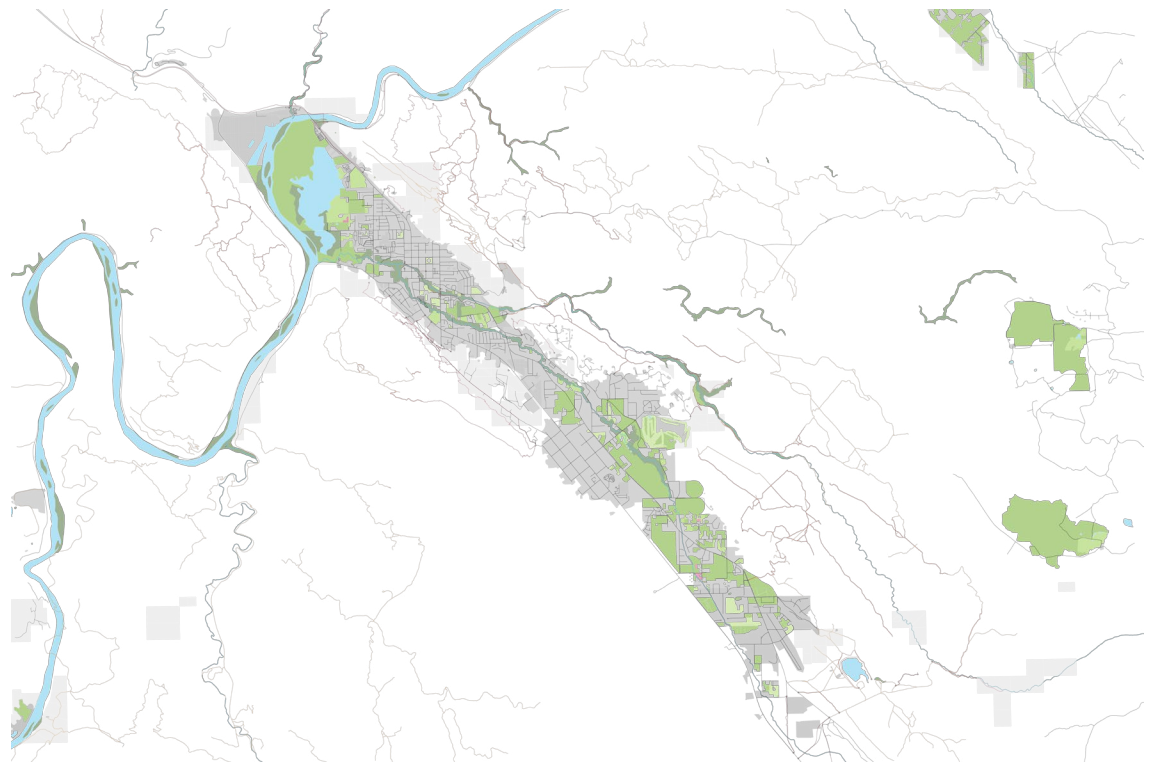


Transportation/Grey Infrastructure

- Articulate bike routes
- Articulate alternative vehicle routes
- Articulate potential alternative routes for semis

Open Space/Green Infrastructure

- Identity potential park locations and recreation opportunities
- Identify areas appropriate for conservation
- Identify areas appropriate for restoration



Which Systems should we include in the Workshop?

Commercial/Industrial

- Identify sites for commercial/ industrial growth

Civic and Social Institutions

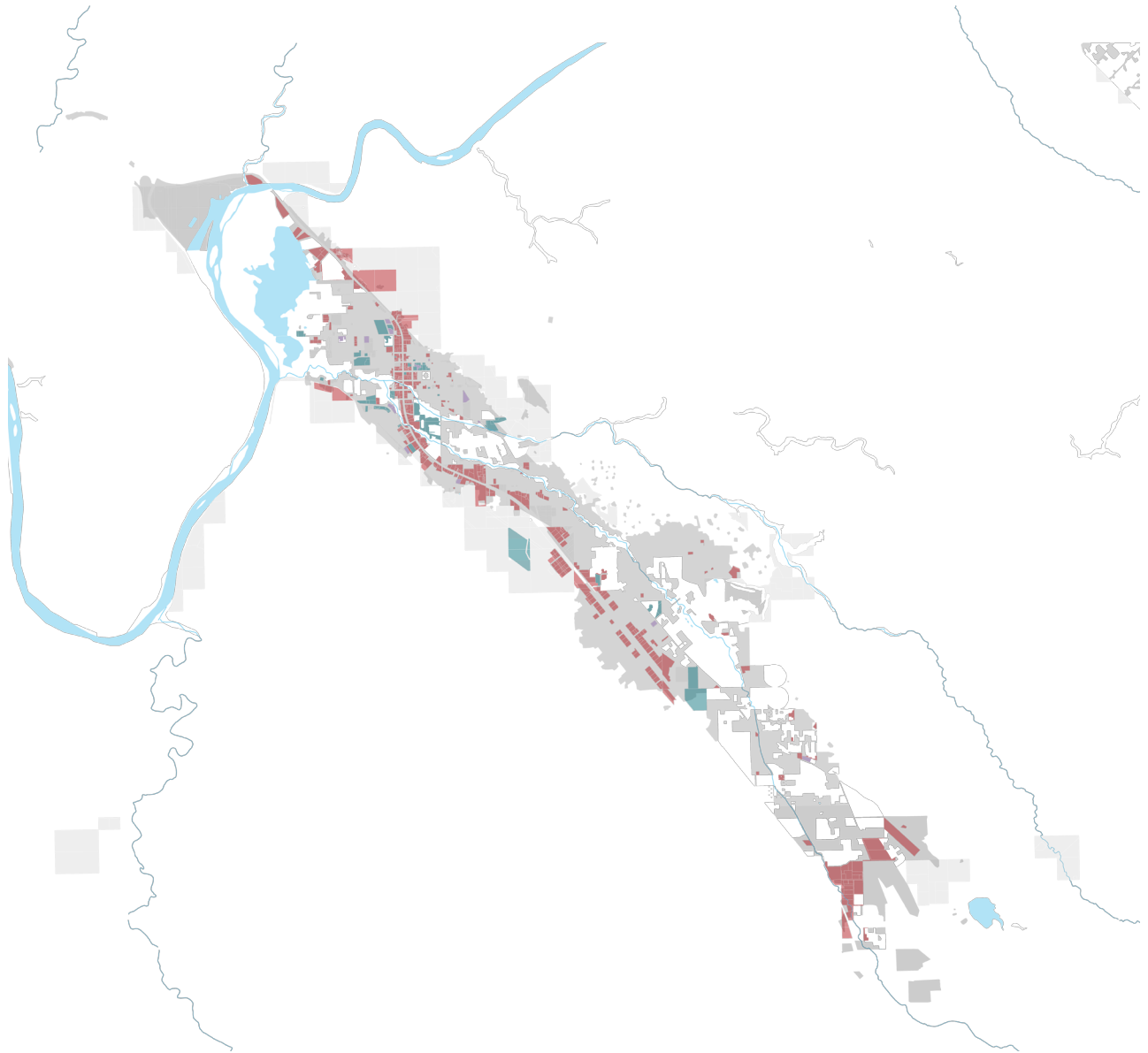
- Identify locations for the expansion of the education/police/fire system
- Identify locations for civic institutions (museum, public amphitheater, visitors center, ext.)

Character/Zoning

- Propose projects and policies that promote the character of Moab
- Propose overlay zoning policies to promote densification and alternative housing options

Water/Environmental

- Identify projects and policies to conserve water use
- Identify projects and policies to promote water quality
- Identify Environmental Protection Projects and Policies



Project Specifics Discussion

- **Who should be involved in the Workshop?**
- **Creating Projects and Policies**
 - I will conduct interviews with workshop participants to collect project and policy proposals using maps I have created, aerial photos and evaluation maps
 - This might take place with at the completion of the workshop
- **Should we use the GeodesignHub app to survey the popularity of proposed projects and policies?**
 - Swipe left swipe right style app that would allow interested parties to identify the projects and policy proposals that they either like or dislike
- **How might workshop results be best represented?**
 - Follow up workshop with a presentation to the city council
 - What would move the housing plan forward most effectively? Proposal, master plan concept, presentation, report?

Workshop Timeline

● June

● July

● August

● Sept

Determine Workshop Boundary
Determine Workshop Systems
Determine Workshop Participants



Use GeodesignHub app to Survey
Public on the Popularity of projects
and Policies



Collect Project and Policy Proposals
from Workshop participants.

Conduct Workshop

Use workshop results to produce
developed final resulting Masterplan



Workshop Format Discussion

2 Day Workshop Outline

- Day 1 morning: introduce software, in system groups review projects, add new ones
- Day 1 afternoon: introduce program of change, in change teams create initial proposal
- Day 2: morning: present proposals to all the teams, sociogram; start negotiations between teams
- Day 2: afternoon: final negotiation / discussion of costs and timeline

Schedule for workshop preparation:

- Establish workshop scope with Moab organizers
- Gather data
- Develop evaluation models
- Gather projects and policies from workshop participants, etc.
- Set up geodesignhub software
- Preparation of workshop
- Workshop
- Post-workshop documentation

Potential Targets Adapted from 2017 Housing Plan

Low-income Housing Targets

Based on total new housing demand by household income level <50% AMI

2020 - **104** new housing units
2030 - **280** new housing units
2040 - **480** new housing units
2050 - **707** new housing units

Equatable Housing Targets

• Based on total new housing demand by household income level <80% AMI

• 2020 - **177** new housing units
• 2030 - **503** new housing units
• 2040 - **874** new housing units
• 2050 - **1,294** new housing units

Total Housing Targets

• Based on total new housing demand for all household income levels

• 2020 - **317** new housing units
• 2030 - **1,024** new housing units
• 2040 - **1,827** new housing units
• 2050 - **2,464** new housing units

Arriving at Low-income Housing Targets

- Household income between 30 percent and 50 percent of Area Median Income as defined by HUD are considered **low income households**.
- Household income below 30 percent of Area Median Income as defined by HUD are considered **very low income households**.
- Low income housing targets are based on *2017 Moab Area Affordable Housing Plan Report* projections of total new housing unit demand for households earning an **income less than 50 percent of Area Median Income** as defined by HUD.
- This number will not take into account the number of currently cost burdened owners and renters living in the area.

Arriving at Equatable Housing Targets

- **Equatable housing** is defined as diverse, quality, physically accessible, **affordable housing choices** with access to opportunities, services and amenities. (oregonmetro.gov)
- Households paying more than 30 percent (30%) of gross annual household income are considered **cost-burdened**.
- Households paying more than 50 percent (50%) of gross annual household income are considered **severely cost-burdened**.
- Currently, at least **1,000 households** earning less than 80 percent of AMI in Grand County are cost-burdened, Representing nearly 1/3 of all households.

Workshop Goals Discussion

What would you like to accomplish with the workshop project?

Potential Goals Adapted from 2017 Housing Plan

Potential Project Goals

- Propose a **housing master plan** that achieves the housing vision for 2050.
- Identify **site locations and assign proposed housing typologies** to create enough affordable housing in the Moab Area so that it is not a limiting factor for community's evolution.
- Identify sites for a **wider range of housing and development types**, especially attached dwellings and apartments.
- Identify sites and housing types to provide a **mix of ownership, rental, and seasonal housing** opportunities.
- Identify sites appropriate for **senior housing** and housing for individuals with **special needs** and **mental or behavioral health issues**.
- Encourage the development of **public transportation system**.
- Develop a housing plan for Moab that will set the city apart as a **model community** in the way of implementing successful housing.

Potential Project Objectives

- **Identify sites for housing projects and assign for them housing typologies**, with the intent of meeting affordable housing targets for 2020, 2030, 2040, and 2050.
- **Propose land use regulations** that will provide opportunities for affordable housing development.
- **Facilitate public-private partnerships** that lead to affordable housing construction and economic development.