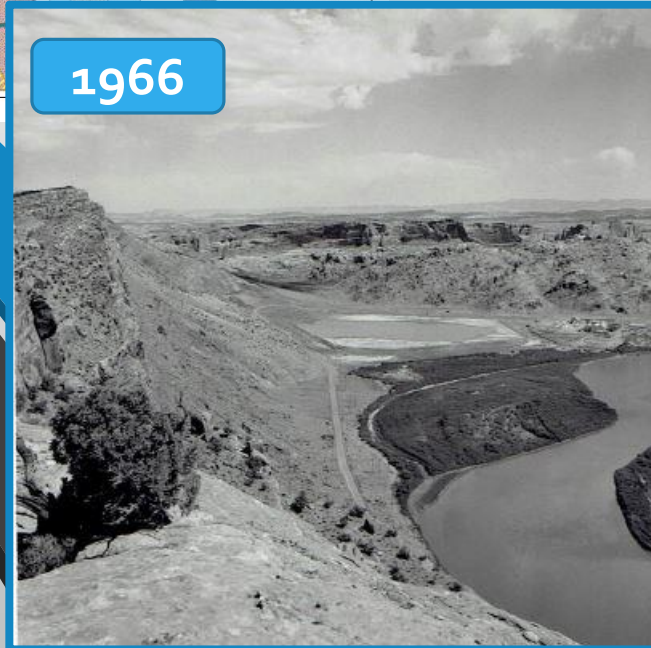
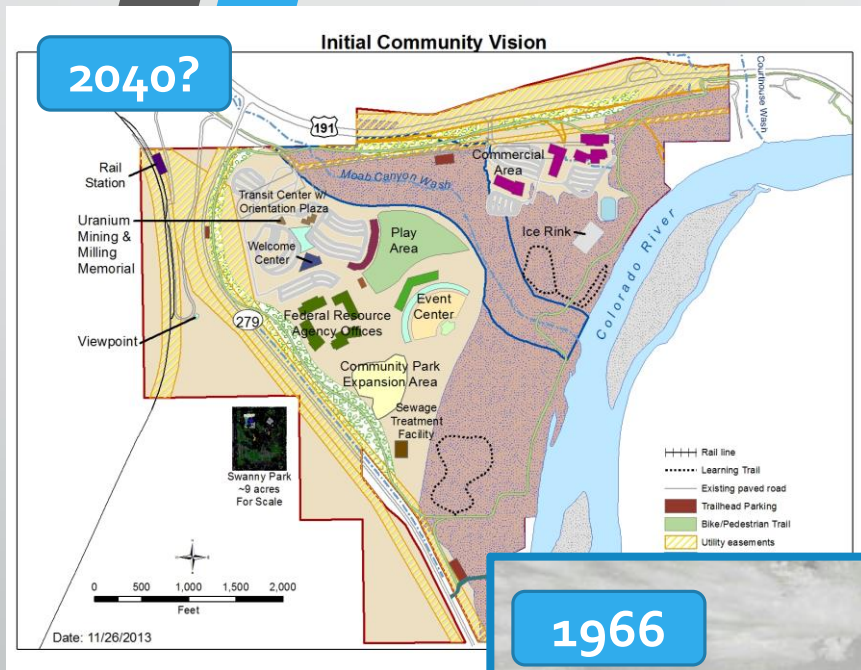
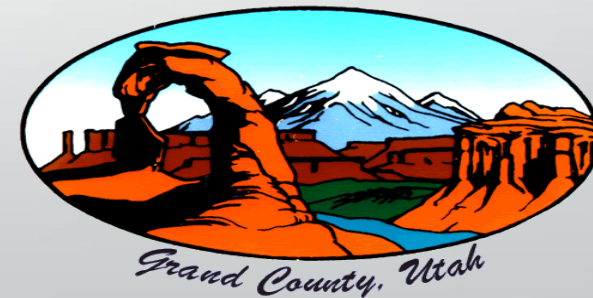


Developing the *Moab UMTRA Site:* Conditions and Constraints



Lee Shenton, Grand County UMTRA Liaison

May 8, 2018



From Mines to Mill and More

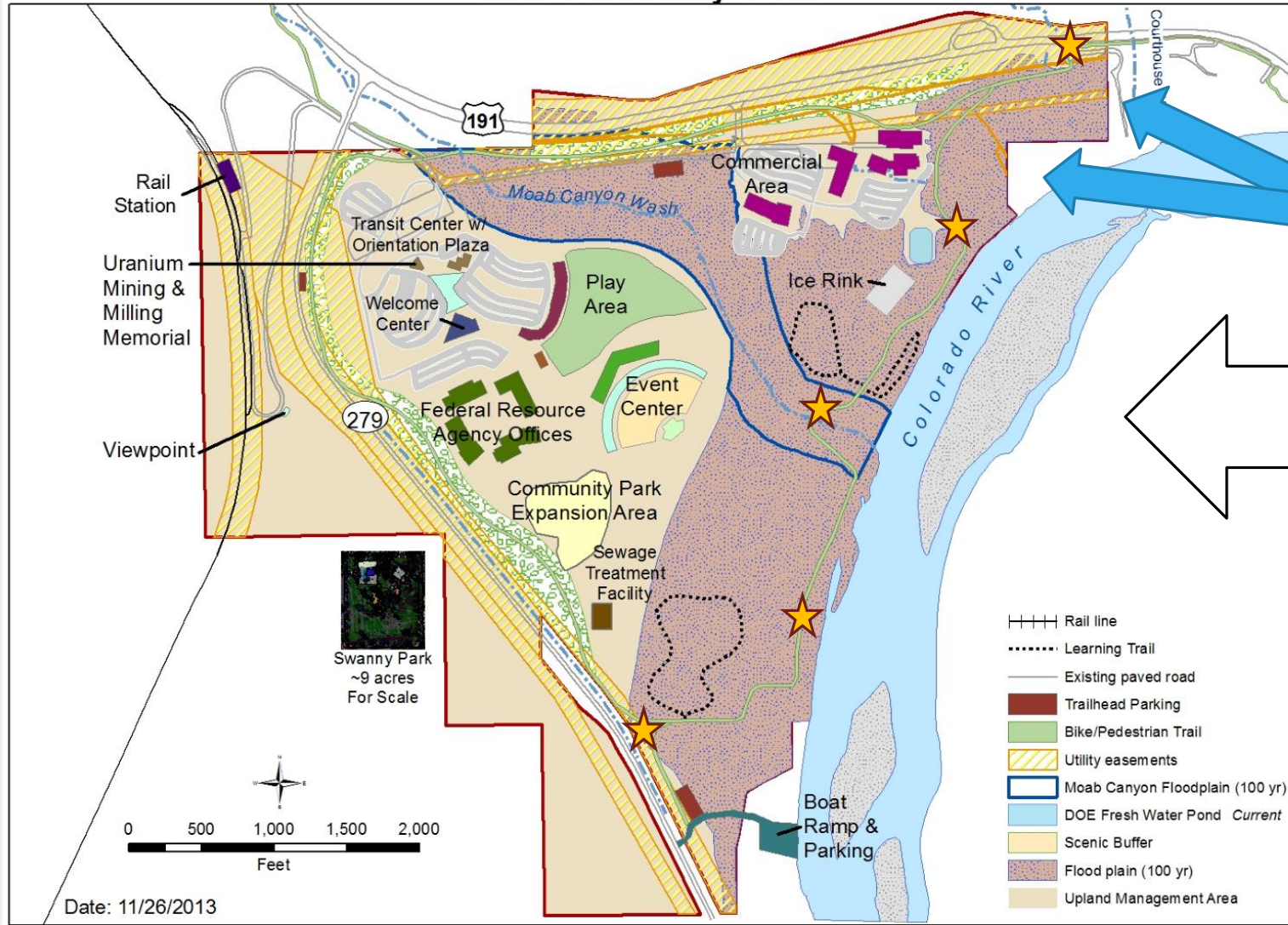


Atlas Mill
1966

Photo courtesy of USDOE

- **1952** - Legendary local Charlie Steen discovered major uranium ore deposit, spurring mining boom in Lisbon Valley
- **1956** – Steen built *Uranium Reduction Company* mill north of Moab, sold to *Atlas Minerals* in 1962
- **1984** - Atlas Mill closed, ~16 million tons tailings accumulated
- **2001** – Congress authorized USDOE to remediate mill site (UMTRCA Title I)
- **Today** - 57% of tailings removed since 2009, remainder by about 2034 then site reclamation for a few more years.

Initial Community Vision

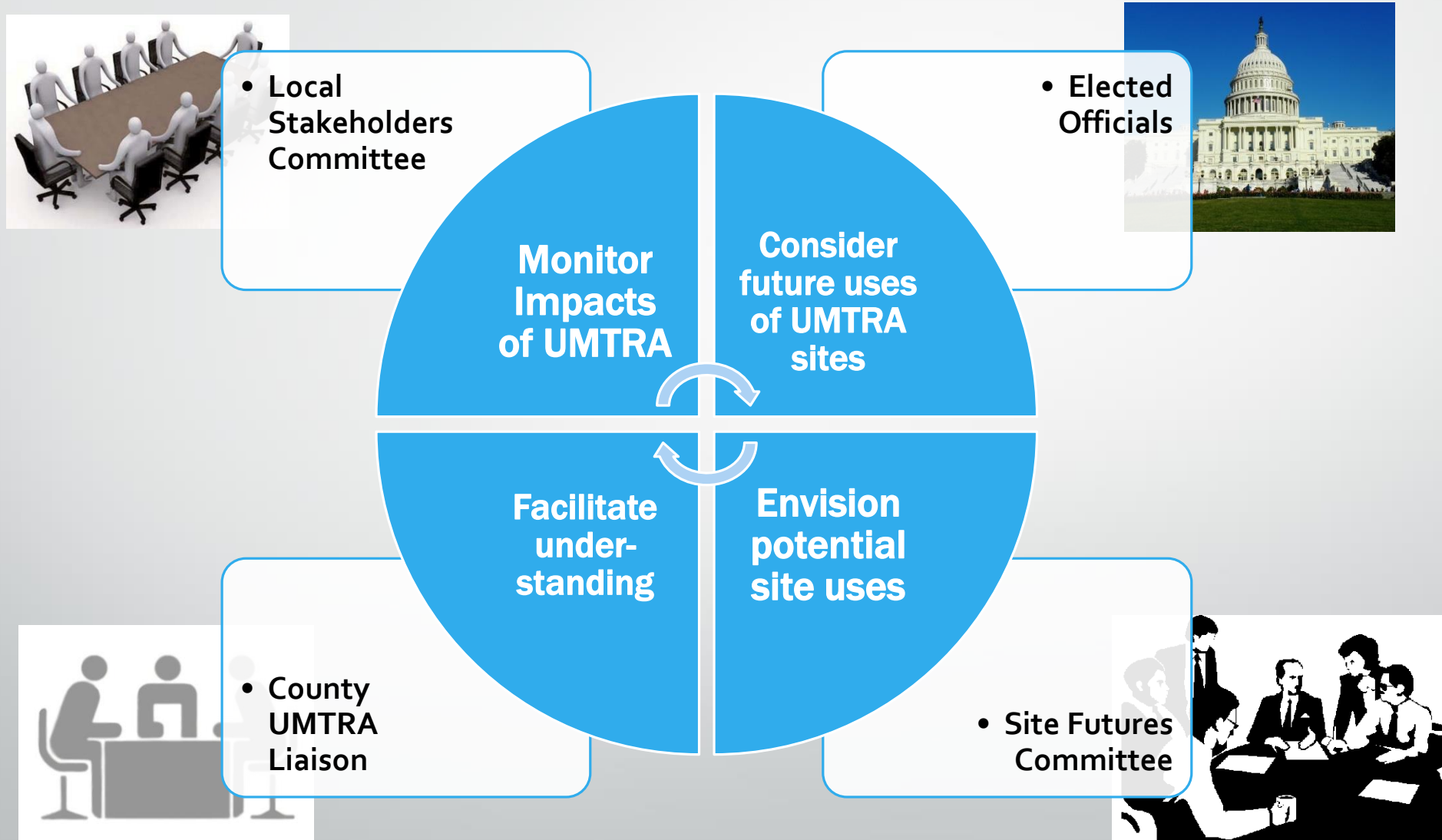


Other Potential Uses

- Privately-owned properties.
- **Initial Community Vision** for UMTRA site established in 2013-2014 (5-yr review in progress).

★ **Millsite Riverside Trail** proposed by UMTRA for future recreational use and well field maintenance by DOE after remediation ends.

Community Involvement



Conditions

~1.6 million visitors enter Arches NP each year of **~2.8 million** visiting Moab area.

USDOE managing remediation project, oversight by **Nuclear Regulatory Commission**, subject to **NEPA reviews**.

Much windblown surface contamination removed but **deep contamination TBD**.

Tailings removal until ~2034 at current funding level, followed by site reclamation.

Extraction/injection wells still needed after tailings removed, duration TBD.

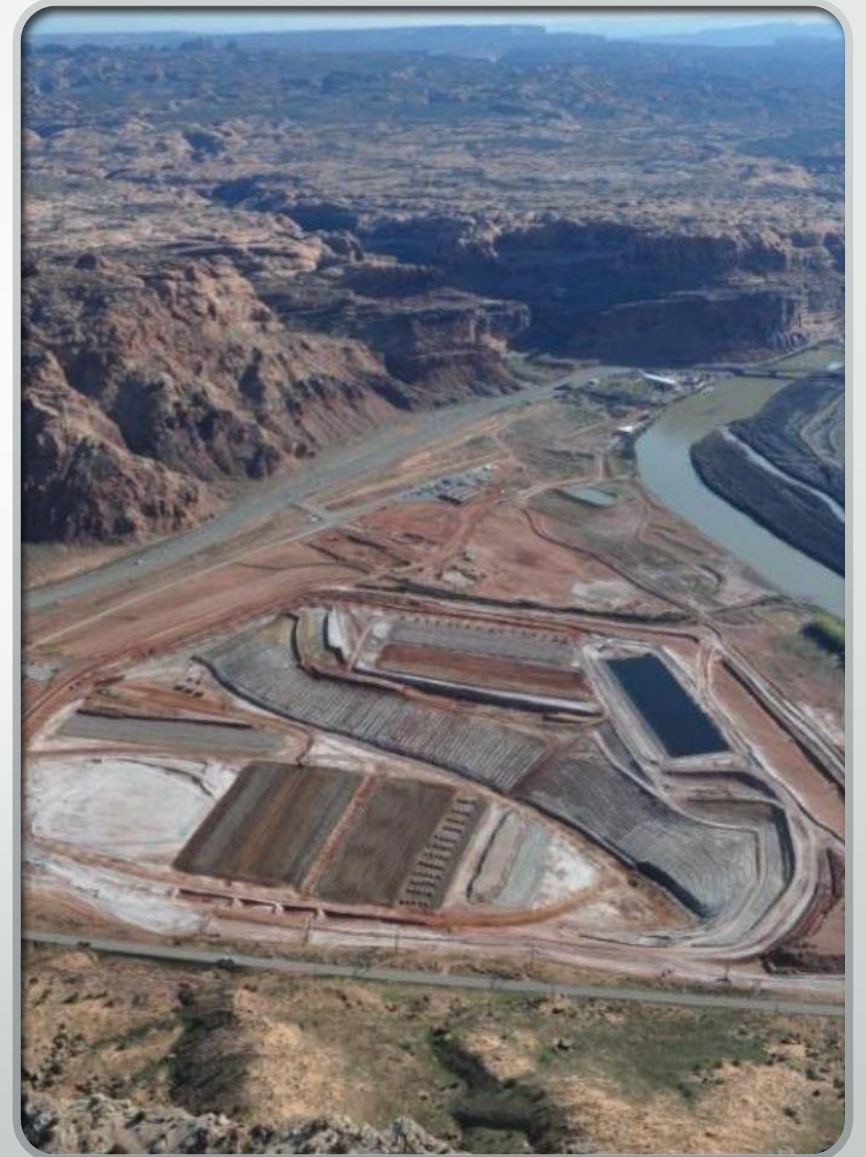


Photo courtesy of USDOE

Constraints

- **USDOE does not currently allow public use of any portion of UMTRA site.**
- **Potable water and waste treatment** must be provided by Arches SSD facility across wash.
- **No construction** in major NG pipeline easement, **limited construction** in remediated areas.
- **DOE requires periodic access** to river water intake and well systems, maybe for decades.
 - **UDOT restricts access** to US-191.
 - **Floodplain sites** must be raised before development.
- **Army Corps of Engineers permit** needed in floodplain, **State Lands permit** in riparian zone



Rights of First Refusal

1. DOE must determine that site is “surplus” to DOE needs
2. Other federal agencies, starting with DOI (NPS and BLM)
3. State of Utah (State Parks for example)
4. Grand County (if site not annexed first by City of Moab)
5. Private buyer? willing to reimburse \$100-150 million remediation costs for 50 acres?

References

- Moab UMTRA website (official DOE information)
 - gjem.energy.gov/Moab/index.htm
- Tailings Project websites (local perspectives and records)
 - Ut-grandcounty.civicplus.com/257/Moab-UMTRA-Project
 - Ut-grandcounty.civicplus.com/205/Moab-Tailings-Project-Steering-Committee
 - Ut-grandcounty.civicplus.com/206/Moab-Tailings-Project-Site-Futures-Commi